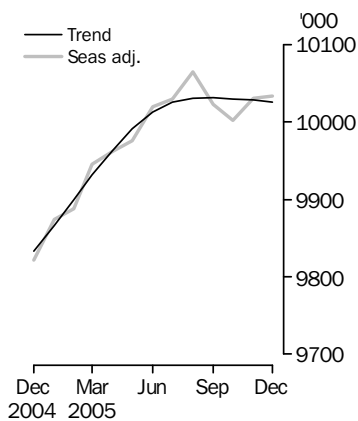


LABOUR FORCE

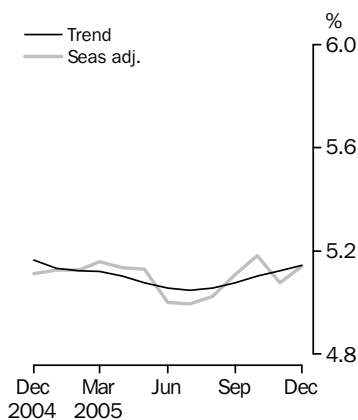
AUSTRALIA

EMBARGO: 11.30AM (CANBERRA TIME) THURS 12 JAN 2006

Employed Persons



Unemployment rate



INQUIRIES

For further information about these and related statistics, contact the National Information and Referral Service on 1300 135 070 or Michael Johnson on Canberra (02) 6252 6525.

KEY FIGURES

	Nov 2005	Dec 2005	Nov 05 to Dec 05	Dec 04 to Dec 05
Trend				
Employed persons ('000)	10 028.3	10 025.3	-3.0	2.0 %
Unemployed persons ('000)	541.5	543.7	2.2	1.5 %
Unemployment rate (%)	5.1	5.1	0.0 pts	0.0 pts
Participation rate (%)	64.4	64.3	-0.1 pts	0.4 pts
Seasonally Adjusted				
Employed persons ('000)	10 030.9	10 033.0	2.1	2.1 %
Unemployed persons ('000)	536.6	543.6	7.0	2.7 %
Unemployment rate (%)	5.1	5.1	0.1 pts	0.0 pts
Participation rate (%)	64.4	64.4	0.0 pts	0.6 pts

KEY POINTS

TREND ESTIMATES (MONTHLY CHANGE)

- EMPLOYMENT decreased to 10,025,300
- UNEMPLOYMENT increased to 543,700
- UNEMPLOYMENT RATE remained at 5.1%
- PARTICIPATION RATE decreased to 64.3%

SEASONALLY ADJUSTED ESTIMATES (MONTHLY CHANGE)

EMPLOYMENT

- increased by 2,100 to 10,033,000. Full-time employment decreased by 4,800 to 7,141,300 while part-time employment increased by 6,900 to 2,891,700.

UNEMPLOYMENT

- increased by 7,000 to 543,600. The number of persons looking for full-time work decreased by 2,300 to 381,200 and the number of persons looking for part-time work increased by 9,300 to 162,400.

UNEMPLOYMENT RATE

- increased slightly, but the rounded estimate remained at 5.1%. The male unemployment rate remained at 5.1% and the female unemployment rate increased by 0.1 percentage point to 5.2%.

PARTICIPATION RATE

- remained at 64.4%.

NOTES

FORTHCOMING ISSUES

<i>ISSUE</i>	<i>RELEASE DATE</i>
January 2006	9 February 2006
February 2006	9 March 2006
March 2006	6 April 2006
April 2006	11 May 2006
May 2006	8 June 2006
June 2006	13 July 2006



ROUNDING

Estimates of monthly change shown on the front cover have been calculated using unrounded estimates, and may be different from, but are more accurate than, movements obtained from the rounded estimates. The graphs on the front cover also depict unrounded estimates.

SAMPLING ERRORS

The estimates in this publication are based on a sample survey. Because the entire population is not enumerated, the published estimates and the movements derived from them are subject to sampling variability. Standard errors give a measure of this variability and appear on pages 27 and 28.

The 95% confidence intervals below provide another way of looking at the variability inherent in estimates from sample surveys. The interval bounded by the two limits is the 95% confidence interval. A 95% confidence interval has a 95% chance of including the true value of the estimate.

MOVEMENTS IN SEASONALLY ADJUSTED SERIES BETWEEN NOVEMBER AND DECEMBER 2005



	<i>Monthly change</i>	<i>95% Confidence interval</i>
Total Employment	2 100	-49 900 to 54 100
Total Unemployment	7 000	-21 200 to 35 200
Unemployment rate	0.1 pts	-0.1 pts to 0.3 pts
Participation rate	0.0pts	-0.4 pts to 0.4pts

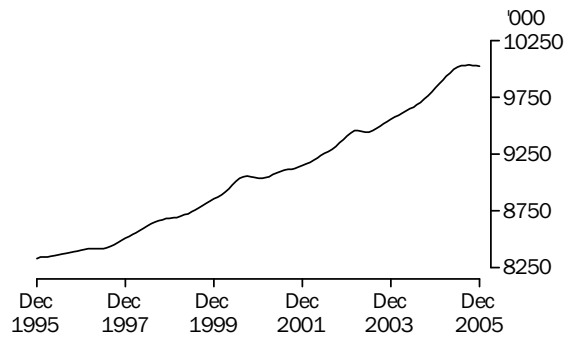


Dennis Trewin
Australian Statistician

PRINCIPAL LABOUR FORCE SERIES TREND ESTIMATES

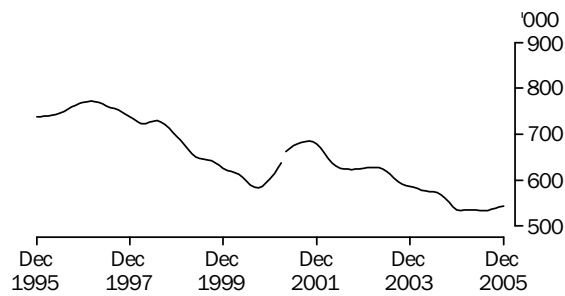
EMPLOYED PERSONS

The trend estimate of employed persons rose from 8,335,200 in December 1995 to 9,056,400 in September 2000. The trend then fell slightly to 9,034,700 in January 2001, before rising to stand at 10,031,300 in September 2005. The trend has fallen slightly since then to stand at 10,025,300 in December 2005.



UNEMPLOYED PERSONS

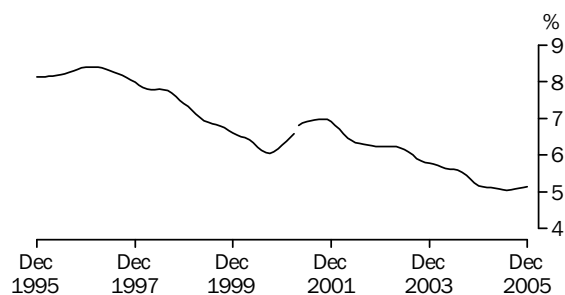
The trend estimate of unemployed persons rose from 738,000 in December 1995 to 771,700 in February 1997. The trend then generally fell to 583,400 in September 2000, before rising to 685,300 in October 2001. The trend then fell to 533,000 in July 2005, before rising to stand at 543,700 in December 2005.



Series break at April 2001; see paragraph 13 of Explanatory Notes.

UNEMPLOYMENT RATE

The trend unemployment rate rose from 8.1% in December 1995 to 8.4% in February 1997, before falling to 6.1% in September 2000. After rising to 7.0% in October 2001, the trend has since generally fallen to stand at 5.1% in December 2005.



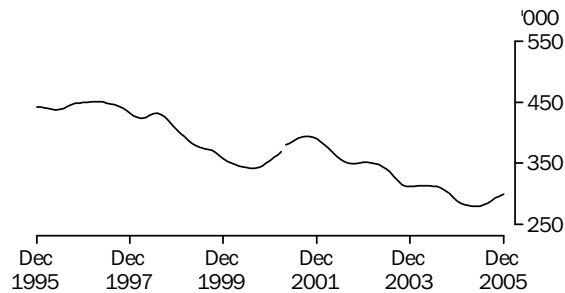
Series break at April 2001; see paragraph 13 of Explanatory Notes.

UNEMPLOYED PERSONS TREND ESTIMATES

UNEMPLOYED MALES

TOTAL

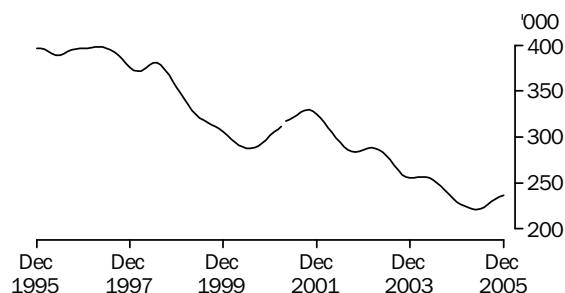
The trend estimate of unemployed males rose from 442,000 in December 1995 to 451,000 in March 1997. The trend then generally fell to 342,100 in August 2000, before rising to 394,000 in October 2001. The trend estimate then fell to 279,700 in May 2005, before rising to stand at 299,600 in December 2005.



Series break at April 2001; see paragraph 13 of Explanatory Notes.

MALES LOOKING FOR FULL-TIME WORK

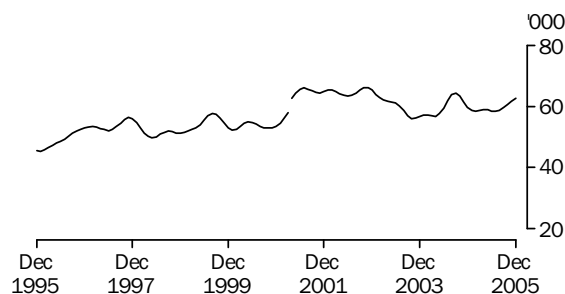
The trend estimate of unemployed males looking for full-time work generally decreased from 396,500 in December 1995 to 287,900 in July 2000. The trend then rose to 329,500 in October 2001, before generally falling to 220,900 in May 2005. The trend has since risen to stand at 236,900 in December 2005.



Series break at April 2001; see paragraph 13 of Explanatory Notes.

MALES LOOKING FOR PART-TIME WORK

Although fluctuating, the trend estimate of unemployed males looking for part-time work increased from 45,500 in December 1995 to 66,200 in November 2002. The trend then fell to 56,000 in October 2003, before rising to 64,200 in September 2004. The trend estimate then fell to 58,300 in July 2005, before rising to stand at 62,700 in December 2005.



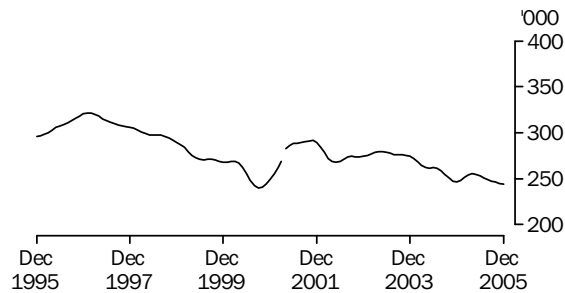
Series break at April 2001; see paragraph 13 of Explanatory Notes.

UNEMPLOYED PERSONS TREND ESTIMATES *continued*

UNEMPLOYED FEMALES

TOTAL

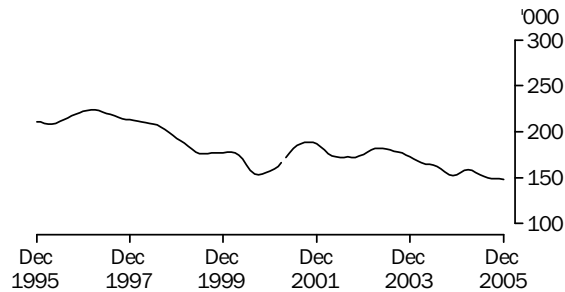
The trend estimate of unemployed females rose from 296,000 in December 1995 to 321,400 in January 1997. The trend then fell to 240,000 in September 2000, before rising to 291,700 in November 2001. Since then, the trend estimate has generally fallen to stand at 244,100 in December 2005.



Series break at April 2001; see paragraph 13 of Explanatory Notes.

FEMALES LOOKING FOR FULL-TIME WORK

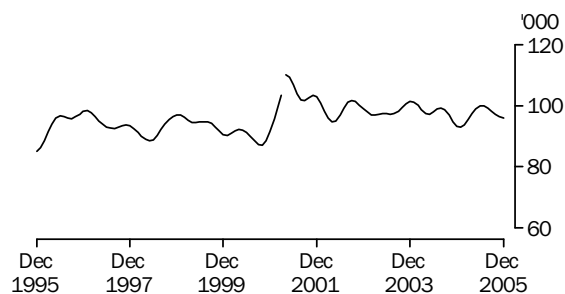
The trend estimate of unemployed females looking for full-time work rose from 211,000 in December 1995 to 223,700 in February 1997, before generally falling to 152,700 in September 2000. The trend then rose to 188,700 in October 2001. Since then, although increasing for short periods in early 2003 and early 2005, the trend has generally fallen to stand at 148,300 in December 2005.



Series break at April 2001; see paragraph 13 of Explanatory Notes.

FEMALES LOOKING FOR PART-TIME WORK

The trend estimate of unemployed females looking for part-time work has fluctuated over the last 10 years, rising from 85,000 in December 1995 to a high of 110,100 in April 2001. The trend estimate currently stands at 95,800 in December 2005.



Series break at April 2001; see paragraph 13 of Explanatory Notes.

LABOUR FORCE STATUS (AGED 15 YEARS & OVER): Trend

	EMPLOYED			UNEMPLOYED		Labour force	UNEMPLOYMENT RATE		Participation rate
	Full time	Part time	Total	Looking for f/t work	Total		Looking for f/t work	Total	
	'000	'000	'000	'000	'000		'000	%	
MALES									
December 2002	4 427.6	769.6	5 197.2	286.3	351.6	5 548.7	6.1	6.3	71.8
December 2003	4 532.6	784.5	5 317.1	255.1	311.7	5 628.8	5.3	5.5	71.7
2004									
December	4 611.5	817.5	5 429.0	229.4	289.1	5 718.1	4.7	5.1	71.7
2005									
January	4 628.8	818.8	5 447.6	226.8	285.5	5 733.1	4.7	5.0	71.8
February	4 648.0	818.3	5 466.2	224.7	283.1	5 749.4	4.6	4.9	71.9
March	4 668.0	816.2	5 484.2	222.9	281.6	5 765.8	4.6	4.9	72.0
April	4 688.1	813.0	5 501.1	221.5	280.4	5 781.5	4.5	4.8	72.2
May	4 705.3	809.8	5 515.1	220.9	279.7	5 794.8	4.5	4.8	72.3
June	4 717.2	807.7	5 524.9	221.7	280.1	5 805.1	4.5	4.8	72.3
July	4 722.3	807.0	5 529.2	223.7	282.0	5 811.3	4.5	4.9	72.3
August	4 721.6	807.4	5 529.1	226.6	285.3	5 814.3	4.6	4.9	72.2
September	4 717.8	808.6	5 526.4	229.7	289.3	5 815.6	4.6	5.0	72.2
October	4 713.2	809.8	5 523.0	232.7	293.2	5 816.2	4.7	5.0	72.1
November	4 709.1	810.7	5 519.8	235.0	296.5	5 816.3	4.8	5.1	72.0
December	4 704.9	811.2	5 516.1	236.9	299.6	5 815.7	4.8	5.2	71.9
FEMALES									
December 2002	2 283.9	1 931.7	4 215.6	175.3	274.2	4 489.8	7.1	6.1	56.1
December 2003	2 308.5	1 929.6	4 238.1	173.0	274.2	4 512.4	7.0	6.1	55.5
2004									
December	2 413.2	1 990.8	4 404.0	153.1	246.4	4 650.4	6.0	5.3	56.4
2005									
January	2 418.0	2 001.0	4 419.0	155.4	248.3	4 667.3	6.0	5.3	56.6
February	2 422.9	2 010.1	4 433.0	157.8	251.5	4 684.5	6.1	5.4	56.7
March	2 428.4	2 018.9	4 447.4	158.7	254.2	4 701.6	6.1	5.4	56.9
April	2 434.6	2 027.8	4 462.3	157.9	255.3	4 717.6	6.1	5.4	57.0
May	2 439.8	2 036.7	4 476.6	155.8	254.8	4 731.3	6.0	5.4	57.1
June	2 442.1	2 046.1	4 488.3	153.2	253.1	4 741.4	5.9	5.3	57.2
July	2 441.1	2 055.6	4 496.6	151.1	250.9	4 747.6	5.8	5.3	57.2
August	2 437.9	2 063.9	4 501.8	149.9	249.0	4 750.8	5.8	5.2	57.2
September	2 433.8	2 071.2	4 505.0	149.2	247.4	4 752.4	5.8	5.2	57.1
October	2 430.0	2 076.9	4 507.0	148.8	246.1	4 753.0	5.8	5.2	57.1
November	2 427.4	2 081.1	4 508.5	148.5	244.9	4 753.5	5.8	5.2	57.0
December	2 424.5	2 084.7	4 509.2	148.3	244.1	4 753.3	5.8	5.1	57.0
PERSONS									
December 2002	6 711.5	2 701.3	9 412.7	461.5	625.8	10 038.5	6.4	6.2	63.8
December 2003	6 841.1	2 714.1	9 555.2	428.1	585.9	10 141.2	5.9	5.8	63.5
2004									
December	7 024.7	2 808.3	9 833.0	382.6	535.5	10 368.5	5.2	5.2	63.9
2005									
January	7 046.8	2 819.8	9 866.6	382.2	533.7	10 400.4	5.1	5.1	64.1
February	7 070.8	2 828.4	9 899.2	382.5	534.7	10 433.9	5.1	5.1	64.2
March	7 096.4	2 835.2	9 931.6	381.6	535.9	10 467.4	5.1	5.1	64.3
April	7 122.7	2 840.7	9 963.4	379.4	535.7	10 499.1	5.1	5.1	64.5
May	7 145.2	2 846.5	9 991.7	376.7	534.5	10 526.2	5.0	5.1	64.6
June	7 159.4	2 853.8	10 013.2	374.9	533.3	10 546.5	5.0	5.1	64.6
July	7 163.3	2 862.5	10 025.9	374.9	533.0	10 558.8	5.0	5.0	64.6
August	7 159.6	2 871.3	10 030.9	376.5	534.3	10 565.1	5.0	5.1	64.6
September	7 151.6	2 879.8	10 031.3	379.0	536.7	10 568.0	5.0	5.1	64.5
October	7 143.2	2 886.7	10 029.9	381.5	539.3	10 569.2	5.1	5.1	64.5
November	7 136.5	2 891.8	10 028.3	383.5	541.5	10 569.8	5.1	5.1	64.4
December	7 129.4	2 895.9	10 025.3	385.1	543.7	10 569.0	5.1	5.1	64.3

LABOUR FORCE STATUS (AGED 15 YEARS & OVER): **Seasonally Adjusted**

	EMPLOYED			UNEMPLOYED		Labour force	UNEMPLOYMENT RATE		Participation rate
	Full time	Part time	Total	Looking for f/t work	Total		Looking for f/t work	Total	
	'000	'000	'000	'000	'000		'000	%	
MALES									
December 2002	4 428.5	768.6	5 197.1	291.8	358.7	5 555.8	6.2	6.5	71.9
December 2003	4 529.8	792.7	5 322.5	254.5	310.5	5 633.0	5.3	5.5	71.8
2004									
December	4 601.9	817.5	5 419.4	230.5	287.5	5 706.9	4.8	5.0	71.5
2005									
January	4 633.1	824.3	5 457.4	229.0	284.4	5 741.7	4.7	5.0	71.9
February	4 648.1	810.8	5 458.9	220.5	281.7	5 740.6	4.5	4.9	71.8
March	4 666.2	819.2	5 485.4	221.6	282.9	5 768.3	4.5	4.9	72.1
April	4 691.2	818.3	5 509.5	224.9	281.9	5 791.4	4.6	4.9	72.3
May	4 699.3	806.9	5 506.2	224.2	285.0	5 791.2	4.6	4.9	72.2
June	4 723.2	804.8	5 527.9	219.5	276.2	5 804.2	4.4	4.8	72.3
July	4 720.2	806.1	5 526.3	216.3	274.1	5 800.4	4.4	4.7	72.2
August	4 746.9	802.7	5 549.6	228.7	287.9	5 837.5	4.6	4.9	72.5
September	4 714.9	811.6	5 526.5	231.3	290.6	5 817.1	4.7	5.0	72.2
October	4 684.8	818.4	5 503.3	236.0	296.6	5 799.9	4.8	5.1	71.9
November	4 718.4	803.4	5 521.8	236.8	297.0	5 818.8	4.8	5.1	72.0
December	4 707.3	811.7	5 519.0	232.6	297.7	5 816.7	4.7	5.1	71.9
FEMALES									
December 2002	2 290.7	1 924.8	4 215.5	173.9	273.9	4 489.4	7.1	6.1	56.1
December 2003	2 310.5	1 929.2	4 239.8	175.7	278.3	4 518.1	7.1	6.2	55.6
2004									
December	2 404.9	1 997.7	4 402.6	151.3	241.7	4 644.3	5.9	5.2	56.3
2005									
January	2 410.5	2 006.3	4 416.8	157.5	249.2	4 666.0	6.1	5.3	56.5
February	2 434.1	1 995.3	4 429.4	160.8	252.5	4 681.9	6.2	5.4	56.7
March	2 421.5	2 038.5	4 460.0	159.6	258.0	4 718.0	6.2	5.5	57.1
April	2 438.6	2 014.4	4 453.0	160.5	257.2	4 710.2	6.2	5.5	56.9
May	2 425.2	2 044.2	4 469.4	154.2	254.3	4 723.7	6.0	5.4	57.1
June	2 458.8	2 032.8	4 491.6	151.7	251.1	4 742.7	5.8	5.3	57.2
July	2 443.6	2 059.7	4 503.3	151.7	253.3	4 756.6	5.8	5.3	57.3
August	2 435.9	2 079.4	4 515.3	145.4	244.4	4 759.6	5.6	5.1	57.3
September	2 441.0	2 054.9	4 495.9	152.4	249.0	4 744.9	5.9	5.2	57.0
October	2 412.2	2 087.0	4 499.2	150.2	249.9	4 749.1	5.9	5.3	57.0
November	2 427.7	2 081.4	4 509.1	146.7	239.6	4 748.7	5.7	5.0	57.0
December	2 434.0	2 080.0	4 514.0	148.6	245.9	4 759.9	5.8	5.2	57.1
PERSONS									
December 2002	6 719.2	2 693.4	9 412.6	465.7	632.6	10 045.2	6.5	6.3	63.9
December 2003	6 840.3	2 722.0	9 562.3	430.1	588.9	10 151.1	5.9	5.8	63.5
2004									
December	7 006.8	2 815.2	9 822.0	381.8	529.2	10 351.2	5.2	5.1	63.8
2005									
January	7 043.6	2 830.6	9 874.1	386.5	533.6	10 407.7	5.2	5.1	64.1
February	7 082.2	2 806.1	9 888.3	381.3	534.2	10 422.5	5.1	5.1	64.1
March	7 087.8	2 857.7	9 945.4	381.2	540.8	10 486.3	5.1	5.2	64.5
April	7 129.8	2 832.7	9 962.4	385.4	539.2	10 501.6	5.1	5.1	64.5
May	7 124.5	2 851.1	9 975.6	378.5	539.2	10 514.8	5.0	5.1	64.5
June	7 182.0	2 837.6	10 019.6	371.2	527.3	10 546.9	4.9	5.0	64.6
July	7 163.8	2 865.8	10 029.6	368.1	527.4	10 557.0	4.9	5.0	64.6
August	7 182.7	2 882.1	10 064.9	374.1	532.3	10 597.2	5.0	5.0	64.8
September	7 155.9	2 866.6	10 022.5	383.7	539.6	10 562.0	5.1	5.1	64.5
October	7 097.1	2 905.4	10 002.5	386.2	546.5	10 549.0	5.2	5.2	64.3
November	7 146.1	2 884.8	10 030.9	383.5	536.6	10 567.5	5.1	5.1	64.4
December	7 141.3	2 891.7	10 033.0	381.2	543.6	10 576.6	5.1	5.1	64.4

LABOUR FORCE STATUS (AGED 15 YEARS & OVER): Original

	EMPLOYED			UNEMPLOYED			Civilian population aged 15 years and over	UNEMPLOYMENT RATE		Participation rate	
	Full time	Part time	Total	Looking for f/t work	Total	Labour force		Looking for f/t work	Total		
	'000	'000	'000	'000	'000	'000		'000	'000		%
MALES											
December 2002	4 504.0	761.7	5 265.6	285.8	356.1	5 621.7	2 106.6	7 728.2	6.0	6.3	72.7
December 2003	4 605.2	788.1	5 393.2	248.0	306.7	5 699.9	2 150.5	7 850.4	5.1	5.4	72.6
2004											
December	4 675.8	815.0	5 490.8	225.1	284.7	5 775.5	2 204.4	7 979.9	4.6	4.9	72.4
2005											
January	4 630.0	784.6	5 414.6	256.5	314.0	5 728.6	2 259.2	7 987.8	5.2	5.5	71.7
February	4 674.7	776.7	5 451.4	241.7	309.8	5 761.2	2 234.6	7 995.8	4.9	5.4	72.1
March	4 668.5	829.0	5 497.5	220.4	290.0	5 787.5	2 216.2	8 003.7	4.5	5.0	72.3
April	4 684.3	835.3	5 519.6	227.3	288.6	5 808.1	2 203.8	8 012.0	4.6	5.0	72.5
May	4 683.0	813.7	5 496.6	225.6	289.6	5 786.3	2 234.1	8 020.4	4.6	5.0	72.1
June	4 692.1	829.3	5 521.4	218.4	271.2	5 792.5	2 236.2	8 028.7	4.4	4.7	72.1
July	4 715.4	812.1	5 527.5	201.8	252.1	5 779.6	2 259.0	8 038.6	4.1	4.4	71.9
August	4 691.4	806.7	5 498.1	218.7	271.5	5 769.6	2 279.0	8 048.6	4.5	4.7	71.7
September	4 737.9	808.9	5 546.8	232.7	295.9	5 842.7	2 215.7	8 058.5	4.7	5.1	72.5
October	4 683.7	838.6	5 522.3	225.4	281.4	5 803.7	2 265.5	8 069.2	4.6	4.8	71.9
November	4 706.2	793.2	5 499.4	224.6	276.2	5 775.6	2 304.4	8 080.0	4.6	4.8	71.5
December	4 781.1	810.6	5 591.7	226.5	294.6	5 886.3	2 204.4	8 090.8	4.5	5.0	72.8
FEMALES											
December 2002	2 346.3	1 917.8	4 264.1	176.5	273.9	4 538.1	3 465.8	8 003.9	7.0	6.0	56.7
December 2003	2 368.4	1 921.2	4 289.6	178.5	279.5	4 569.1	3 559.5	8 128.6	7.0	6.1	56.2
2004											
December	2 468.7	1 987.6	4 456.3	154.2	243.8	4 700.1	3 545.4	8 245.5	5.9	5.2	57.0
2005											
January	2 430.9	1 919.1	4 350.0	174.7	265.2	4 615.2	3 636.4	8 251.5	6.7	5.7	55.9
February	2 459.0	1 955.7	4 414.7	185.3	291.1	4 705.8	3 551.7	8 257.5	7.0	6.2	57.0
March	2 406.8	2 056.9	4 463.7	168.6	281.5	4 745.2	3 518.4	8 263.6	6.5	5.9	57.4
April	2 409.5	2 043.8	4 453.4	160.7	257.3	4 710.6	3 561.0	8 271.6	6.3	5.5	56.9
May	2 395.3	2 077.7	4 473.0	151.9	252.6	4 725.6	3 554.2	8 279.8	6.0	5.3	57.1
June	2 421.2	2 075.9	4 497.2	149.6	243.0	4 740.1	3 547.7	8 287.8	5.8	5.1	57.2
July	2 445.1	2 048.9	4 494.0	142.5	235.0	4 729.0	3 568.7	8 297.7	5.5	5.0	57.0
August	2 387.2	2 091.3	4 478.6	133.5	229.8	4 708.4	3 599.3	8 307.6	5.3	4.9	56.7
September	2 488.9	2 052.1	4 541.1	150.7	250.8	4 791.9	3 525.6	8 317.5	5.7	5.2	57.6
October	2 403.7	2 105.9	4 509.6	137.0	233.0	4 742.7	3 583.4	8 326.0	5.4	4.9	57.0
November	2 433.7	2 083.8	4 517.6	136.3	219.3	4 736.8	3 597.9	8 334.8	5.3	4.6	56.8
December	2 498.3	2 069.5	4 567.8	150.7	247.1	4 814.9	3 528.4	8 343.3	5.7	5.1	57.7
PERSONS											
December 2002	6 850.3	2 679.5	9 529.7	462.3	630.0	10 159.7	5 572.4	15 732.1	6.3	6.2	64.6
December 2003	6 973.5	2 709.3	9 682.8	426.5	586.2	10 269.0	5 710.0	15 978.9	5.8	5.7	64.3
2004											
December	7 144.5	2 802.6	9 947.1	379.3	528.6	10 475.6	5 749.7	16 225.4	5.0	5.0	64.6
2005											
January	7 060.9	2 703.7	9 764.6	431.2	579.2	10 343.7	5 895.6	16 239.3	5.8	5.6	63.7
February	7 133.7	2 732.3	9 866.0	427.0	600.9	10 467.0	5 786.3	16 253.3	5.6	5.7	64.4
March	7 075.3	2 885.9	9 961.2	389.0	571.4	10 532.6	5 734.6	16 267.2	5.2	5.4	64.7
April	7 093.8	2 879.1	9 972.9	388.1	545.8	10 518.8	5 764.8	16 283.6	5.2	5.2	64.6
May	7 078.2	2 891.4	9 969.7	377.5	542.2	10 511.9	5 788.3	16 300.2	5.1	5.2	64.5
June	7 113.3	2 905.2	10 018.5	368.0	514.1	10 532.6	5 783.9	16 316.6	4.9	4.9	64.6
July	7 160.6	2 861.0	10 021.6	344.3	487.1	10 508.7	5 827.7	16 336.3	4.6	4.6	64.3
August	7 078.7	2 898.0	9 976.7	352.2	501.3	10 478.0	5 878.2	16 356.2	4.7	4.8	64.1
September	7 226.8	2 861.1	10 087.9	383.4	546.7	10 634.6	5 741.4	16 376.0	5.0	5.1	64.9
October	7 087.4	2 944.5	10 031.9	362.4	514.5	10 546.4	5 848.9	16 395.3	4.9	4.9	64.3
November	7 139.9	2 877.1	10 017.0	360.8	495.5	10 512.4	5 902.4	16 414.8	4.8	4.7	64.0
December	7 279.5	2 880.1	10 159.5	377.2	541.7	10 701.2	5 732.8	16 434.1	4.9	5.1	65.1

LABOUR FORCE STATUS (AGED 15 YEARS & OVER)—New South Wales

	TREND					SEASONALLY ADJUSTED					Civilian population aged 15 years and over '000
	Employed full time	Total employed	Total unemployed	Unemployment rate	Participation rate	Employed full time	Total employed	Total unemployed	Unemployment rate	Participation rate	
	'000	'000	'000	%	%	'000	'000	'000	%	%	
MALES											
December 2002	1 493.5	1 742.8	111.9	6.0	71.0	1 493.5	1 732.5	120.0	6.5	70.9	2 611.6
December 2003	1 521.4	1 772.4	98.3	5.3	70.9	1 513.5	1 769.3	99.7	5.3	70.8	2 639.9
2004											
December	1 508.2	1 780.2	94.6	5.0	70.2	1 511.5	1 780.2	93.6	5.0	70.2	2 670.3
2005											
January	1 512.4	1 783.9	95.0	5.1	70.3	1 511.0	1 787.3	94.2	5.0	70.4	2 672.1
February	1 519.1	1 788.1	95.6	5.1	70.5	1 518.9	1 784.5	95.5	5.1	70.3	2 673.9
March	1 527.3	1 792.1	95.9	5.1	70.6	1 518.8	1 782.8	96.0	5.1	70.2	2 675.6
April	1 535.7	1 795.1	95.8	5.1	70.6	1 541.2	1 809.3	96.7	5.1	71.2	2 677.1
May	1 541.7	1 796.5	95.8	5.1	70.6	1 541.2	1 794.9	99.3	5.2	70.7	2 678.6
June	1 544.3	1 796.3	96.5	5.1	70.6	1 556.3	1 798.4	96.5	5.1	70.7	2 680.1
July	1 542.8	1 794.5	98.1	5.2	70.5	1 537.5	1 789.6	88.5	4.7	70.0	2 682.6
August	1 538.2	1 792.0	100.7	5.3	70.5	1 542.9	1 793.3	102.4	5.4	70.6	2 685.1
September	1 532.6	1 789.7	103.8	5.5	70.5	1 531.6	1 790.9	107.7	5.7	70.6	2 687.6
October	1 527.7	1 788.3	106.9	5.6	70.5	1 517.9	1 785.1	108.7	5.7	70.4	2 689.8
November	1 523.8	1 787.4	109.5	5.8	70.5	1 526.6	1 788.0	108.7	5.7	70.5	2 692.0
December	1 520.4	1 786.6	111.7	5.9	70.5	1 522.9	1 787.8	111.0	5.8	70.5	2 694.2
FEMALES											
December 2002	780.2	1 391.2	89.7	6.1	54.9	785.2	1 392.0	86.6	5.9	54.8	2 699.6
December 2003	797.1	1 401.5	85.7	5.8	54.5	794.1	1 397.8	85.9	5.8	54.4	2 728.3
2004											
December	811.3	1 427.9	81.2	5.4	54.8	807.8	1 425.2	80.3	5.3	54.6	2 755.8
2005											
January	809.3	1 431.5	82.6	5.5	54.9	806.8	1 435.3	81.5	5.4	55.0	2 757.0
February	807.6	1 434.9	83.7	5.5	55.1	822.1	1 435.0	83.3	5.5	55.0	2 758.3
March	806.4	1 438.9	83.5	5.5	55.2	793.5	1 443.6	92.3	6.0	55.7	2 759.5
April	805.9	1 444.0	81.9	5.4	55.3	808.4	1 439.4	78.1	5.1	55.0	2 761.4
May	805.4	1 449.6	79.6	5.2	55.3	798.1	1 441.5	78.2	5.1	55.0	2 763.3
June	804.9	1 455.0	77.0	5.0	55.4	819.7	1 455.8	78.0	5.1	55.5	2 765.2
July	805.2	1 459.7	74.9	4.9	55.4	799.9	1 467.4	74.7	4.8	55.7	2 767.9
August	806.8	1 462.9	73.9	4.8	55.5	803.4	1 470.4	70.8	4.6	55.6	2 770.7
September	809.1	1 464.8	73.9	4.8	55.5	810.7	1 460.5	74.1	4.8	55.3	2 773.4
October	812.3	1 465.8	74.1	4.8	55.5	804.5	1 459.6	75.7	4.9	55.3	2 775.2
November	816.3	1 466.5	74.5	4.8	55.5	819.6	1 466.9	73.2	4.8	55.5	2 777.2
December	819.6	1 466.6	75.0	4.9	55.5	828.7	1 469.8	77.1	5.0	55.7	2 779.0
PERSONS											
December 2002	2 273.7	3 134.1	201.5	6.0	62.8	2 278.7	3 124.5	206.6	6.2	62.7	5 311.2
December 2003	2 318.5	3 174.0	184.0	5.5	62.6	2 307.6	3 167.1	185.6	5.5	62.5	5 368.3
2004											
December	2 319.4	3 208.1	175.8	5.2	62.4	2 319.2	3 205.5	173.9	5.1	62.3	5 426.2
2005											
January	2 321.7	3 215.4	177.6	5.2	62.5	2 317.8	3 222.6	175.7	5.2	62.6	5 429.1
February	2 326.6	3 223.0	179.3	5.3	62.6	2 341.0	3 219.5	178.8	5.3	62.6	5 432.1
March	2 333.7	3 231.0	179.4	5.3	62.7	2 312.3	3 226.4	188.4	5.5	62.8	5 435.1
April	2 341.5	3 239.1	177.7	5.2	62.8	2 349.5	3 248.7	174.7	5.1	62.9	5 438.5
May	2 347.1	3 246.1	175.4	5.1	62.9	2 339.3	3 236.5	177.5	5.2	62.7	5 441.9
June	2 349.2	3 251.3	173.4	5.1	62.9	2 376.0	3 254.1	174.5	5.1	63.0	5 445.3
July	2 348.0	3 254.2	173.0	5.0	62.9	2 337.4	3 257.1	163.2	4.8	62.8	5 450.5
August	2 344.9	3 254.9	174.7	5.1	62.9	2 346.3	3 263.6	173.2	5.0	63.0	5 455.7
September	2 341.7	3 254.5	177.7	5.2	62.9	2 342.3	3 251.4	181.8	5.3	62.9	5 460.9
October	2 340.0	3 254.1	181.0	5.3	62.9	2 322.4	3 244.6	184.4	5.4	62.7	5 465.0
November	2 340.1	3 253.9	184.0	5.4	62.9	2 346.2	3 254.9	181.9	5.3	62.8	5 469.2
December	2 340.0	3 253.1	186.7	5.4	62.9	2 351.6	3 257.6	188.0	5.5	63.0	5 473.3

LABOUR FORCE STATUS (AGED 15 YEARS & OVER)—Victoria

	TREND					SEASONALLY ADJUSTED					Civilian population aged 15 years and over '000
	Employed full time	Total employed	Total unemployed	Unemployment rate	Participation rate	Employed full time	Total employed	Total unemployed	Unemployment rate	Participation rate	
	'000	'000	'000	%	%	'000	'000	'000	%	%	
MALES											
December 2002	1 095.4	1 284.4	81.8	6.0	71.4	1 103.8	1 297.2	83.1	6.0	72.2	1 912.9
December 2003	1 113.3	1 317.3	73.4	5.3	71.6	1 109.0	1 318.2	74.2	5.3	71.7	1 942.7
2004											
December	1 143.4	1 346.7	80.1	5.6	72.3	1 145.0	1 348.4	78.9	5.5	72.3	1 974.4
2005											
January	1 145.9	1 351.0	78.4	5.5	72.3	1 150.4	1 351.1	76.8	5.4	72.3	1 976.1
February	1 148.7	1 355.7	77.0	5.4	72.4	1 143.9	1 353.8	78.2	5.5	72.4	1 977.8
March	1 152.1	1 361.2	75.7	5.3	72.6	1 150.6	1 360.8	76.6	5.3	72.6	1 979.5
April	1 156.4	1 367.2	74.4	5.2	72.7	1 158.0	1 368.5	74.1	5.1	72.8	1 982.0
May	1 161.3	1 372.9	72.8	5.0	72.9	1 159.4	1 370.5	73.5	5.1	72.8	1 984.5
June	1 166.2	1 377.4	71.5	4.9	72.9	1 163.3	1 377.1	71.5	4.9	72.9	1 987.1
July	1 169.7	1 379.5	70.9	4.9	72.9	1 173.1	1 379.7	71.5	4.9	72.9	1 989.3
August	1 170.9	1 378.6	71.2	4.9	72.8	1 178.9	1 390.8	65.9	4.5	73.1	1 991.6
September	1 170.1	1 375.6	72.1	5.0	72.6	1 166.5	1 370.6	73.8	5.1	72.4	1 993.8
October	1 168.2	1 371.6	73.3	5.1	72.4	1 168.3	1 370.9	74.2	5.1	72.4	1 996.2
November	1 165.9	1 367.4	74.5	5.2	72.2	1 167.2	1 366.3	76.2	5.3	72.2	1 998.5
December	1 163.1	1 363.1	75.6	5.3	71.9	1 156.7	1 358.2	75.3	5.3	71.6	2 000.8
FEMALES											
December 2002	576.0	1 067.7	61.1	5.4	56.2	578.8	1 065.3	62.6	5.6	56.1	2 010.7
December 2003	568.8	1 053.1	66.0	5.9	54.8	568.2	1 049.9	67.8	6.1	54.8	2 040.8
2004											
December	588.8	1 104.1	67.0	5.7	56.6	591.0	1 107.0	67.7	5.8	56.7	2 070.1
2005											
January	591.5	1 107.7	66.4	5.7	56.7	589.0	1 109.7	66.1	5.6	56.8	2 071.5
February	594.0	1 110.1	66.4	5.6	56.8	595.0	1 110.0	65.7	5.6	56.7	2 072.8
March	595.9	1 110.9	66.8	5.7	56.8	596.9	1 106.5	65.0	5.6	56.5	2 074.1
April	596.6	1 110.1	67.5	5.7	56.7	592.4	1 107.2	69.7	5.9	56.7	2 076.3
May	596.4	1 108.2	68.6	5.8	56.6	601.6	1 117.5	69.3	5.8	57.1	2 078.5
June	595.8	1 106.1	69.7	5.9	56.5	598.9	1 112.4	66.6	5.6	56.7	2 080.7
July	594.9	1 104.9	70.5	6.0	56.4	593.2	1 091.6	72.1	6.2	55.9	2 083.0
August	594.2	1 105.5	70.7	6.0	56.4	586.1	1 107.2	71.0	6.0	56.5	2 085.3
September	593.7	1 107.7	70.4	6.0	56.4	596.0	1 098.6	72.1	6.2	56.1	2 087.5
October	593.5	1 111.3	69.7	5.9	56.5	598.8	1 119.0	70.7	5.9	56.9	2 089.6
November	593.2	1 115.2	68.8	5.8	56.6	592.8	1 117.4	66.7	5.6	56.6	2 091.8
December	593.2	1 119.5	68.0	5.7	56.7	590.9	1 122.3	66.5	5.6	56.8	2 093.9
PERSONS											
December 2002	1 671.4	2 352.1	142.9	5.7	63.6	1 682.6	2 362.5	145.7	5.8	63.9	3 923.6
December 2003	1 682.1	2 370.4	139.4	5.6	63.0	1 677.2	2 368.1	142.0	5.7	63.0	3 983.5
2004											
December	1 732.2	2 450.9	147.1	5.7	64.2	1 736.0	2 455.4	146.6	5.6	64.3	4 044.5
2005											
January	1 737.4	2 458.7	144.8	5.6	64.3	1 739.4	2 460.8	142.9	5.5	64.3	4 047.5
February	1 742.7	2 465.8	143.4	5.5	64.4	1 738.9	2 463.8	144.0	5.5	64.4	4 050.6
March	1 748.0	2 472.1	142.5	5.5	64.5	1 747.5	2 467.3	141.7	5.4	64.4	4 053.6
April	1 752.9	2 477.2	141.9	5.4	64.5	1 750.4	2 475.7	143.8	5.5	64.5	4 058.3
May	1 757.7	2 481.1	141.4	5.4	64.5	1 761.0	2 488.0	142.8	5.4	64.7	4 063.1
June	1 762.0	2 483.5	141.2	5.4	64.5	1 762.2	2 489.6	138.1	5.3	64.6	4 067.8
July	1 764.6	2 484.4	141.4	5.4	64.5	1 766.3	2 471.3	143.6	5.5	64.2	4 072.3
August	1 765.0	2 484.0	141.9	5.4	64.4	1 765.0	2 498.0	136.9	5.2	64.6	4 076.8
September	1 763.8	2 483.4	142.5	5.4	64.3	1 762.6	2 469.2	146.0	5.6	64.1	4 081.4
October	1 761.7	2 482.9	143.0	5.4	64.3	1 767.1	2 489.9	144.8	5.5	64.5	4 085.8
November	1 759.1	2 482.6	143.3	5.5	64.2	1 760.0	2 483.7	142.9	5.4	64.2	4 090.3
December	1 756.3	2 482.5	143.6	5.5	64.2	1 747.7	2 480.6	141.7	5.4	64.0	4 094.7

	TREND					SEASONALLY ADJUSTED					Civilian population aged 15 years and over '000
	Employed full time	Total employed	Total unemployed	Unemployment rate	Participation rate	Employed full time	Total employed	Total unemployed	Unemployment rate	Participation rate	
	'000	'000	'000	%	%	'000	'000	'000	%	%	
MALES											
December 2002	835.4	989.4	72.9	6.9	72.9	827.3	987.1	74.1	7.0	72.8	1 457.6
December 2003	875.6	1 019.6	63.7	5.9	72.4	883.9	1 023.0	60.5	5.6	72.4	1 496.0
2004											
December	914.4	1 070.9	49.8	4.4	72.9	902.4	1 064.9	51.3	4.6	72.6	1 536.7
2005											
January	917.7	1 075.7	48.7	4.3	73.0	916.5	1 075.9	50.9	4.5	73.2	1 539.5
February	922.3	1 080.7	48.1	4.3	73.2	924.7	1 078.0	43.7	3.9	72.7	1 542.3
March	927.6	1 085.5	48.0	4.2	73.4	934.7	1 094.6	44.1	3.9	73.7	1 545.1
April	933.0	1 089.9	48.5	4.3	73.6	929.9	1 092.8	50.2	4.4	73.9	1 547.6
May	937.6	1 093.3	49.2	4.3	73.7	932.7	1 082.8	58.0	5.1	73.6	1 550.2
June	940.9	1 095.6	50.0	4.4	73.8	944.2	1 098.1	43.6	3.8	73.5	1 552.7
July	943.1	1 097.3	50.4	4.4	73.8	946.2	1 097.8	48.8	4.3	73.7	1 555.5
August	944.8	1 098.4	50.5	4.4	73.7	944.0	1 101.9	53.8	4.7	74.2	1 558.4
September	946.0	1 099.3	50.6	4.4	73.6	944.6	1 099.9	49.4	4.3	73.6	1 561.2
October	946.7	1 099.7	50.9	4.4	73.5	946.6	1 097.5	51.0	4.4	73.4	1 564.9
November	947.2	1 099.8	51.3	4.5	73.4	949.0	1 098.2	51.0	4.4	73.3	1 568.7
December	947.0	1 099.1	52.1	4.5	73.3	945.7	1 100.1	52.2	4.5	73.3	1 572.5
FEMALES											
December 2002	429.0	799.1	65.8	7.6	57.7	424.1	793.7	65.8	7.7	57.4	1 498.5
December 2003	443.9	825.6	59.2	6.7	57.5	447.1	828.6	59.8	6.7	57.7	1 538.9
2004											
December	490.3	877.1	47.7	5.2	58.7	488.2	873.7	46.2	5.0	58.4	1 575.5
2005											
January	490.2	881.5	47.7	5.1	58.9	487.4	880.4	49.6	5.3	58.9	1 577.8
February	489.6	885.1	48.3	5.2	59.1	491.7	882.4	48.3	5.2	58.9	1 580.2
March	489.2	888.2	49.5	5.3	59.3	487.4	897.3	45.9	4.9	59.6	1 582.5
April	489.9	891.1	51.1	5.4	59.5	491.4	889.2	53.8	5.7	59.5	1 584.9
May	491.5	893.7	52.8	5.6	59.6	482.7	889.1	52.4	5.6	59.3	1 587.3
June	493.0	895.8	54.0	5.7	59.7	498.1	893.4	53.8	5.7	59.6	1 589.6
July	493.3	897.3	54.5	5.7	59.8	496.8	902.2	55.2	5.8	60.1	1 592.4
August	492.2	898.1	54.2	5.7	59.7	491.8	896.7	56.0	5.9	59.7	1 595.2
September	489.8	898.3	53.2	5.6	59.5	494.4	902.8	53.3	5.6	59.8	1 597.9
October	486.7	897.6	52.1	5.5	59.3	481.9	895.5	51.2	5.4	59.1	1 600.6
November	483.6	896.4	51.0	5.4	59.1	482.6	896.5	49.8	5.3	59.0	1 603.4
December	480.1	894.9	50.0	5.3	58.9	478.9	891.5	49.8	5.3	58.6	1 606.1
PERSONS											
December 2002	1 264.4	1 788.5	138.7	7.2	65.2	1 251.4	1 780.8	139.9	7.3	65.0	2 956.1
December 2003	1 319.5	1 845.2	122.8	6.2	64.8	1 331.0	1 851.6	120.3	6.1	65.0	3 034.9
2004											
December	1 404.6	1 948.0	97.6	4.8	65.7	1 390.6	1 938.6	97.5	4.8	65.4	3 112.2
2005											
January	1 407.9	1 957.3	96.4	4.7	65.9	1 404.0	1 956.3	100.4	4.9	66.0	3 117.4
February	1 411.8	1 965.8	96.3	4.7	66.0	1 416.4	1 960.4	92.0	4.5	65.7	3 122.5
March	1 416.8	1 973.7	97.5	4.7	66.2	1 422.2	1 991.9	90.0	4.3	66.6	3 127.7
April	1 423.0	1 981.0	99.6	4.8	66.4	1 421.3	1 982.1	103.9	5.0	66.6	3 132.5
May	1 429.1	1 987.0	102.0	4.9	66.6	1 415.4	1 971.9	110.3	5.3	66.4	3 137.5
June	1 433.8	1 991.4	104.0	5.0	66.7	1 442.3	1 991.4	97.4	4.7	66.5	3 142.3
July	1 436.4	1 994.6	104.9	5.0	66.7	1 443.0	2 000.0	104.0	4.9	66.8	3 147.9
August	1 437.0	1 996.6	104.6	5.0	66.6	1 435.8	1 998.6	109.8	5.2	66.9	3 153.5
September	1 435.8	1 997.6	103.8	4.9	66.5	1 439.0	2 002.6	102.8	4.9	66.6	3 159.1
October	1 433.4	1 997.3	103.0	4.9	66.3	1 428.4	1 993.0	102.3	4.9	66.2	3 165.5
November	1 430.7	1 996.2	102.3	4.9	66.2	1 431.6	1 994.7	100.8	4.8	66.1	3 172.1
December	1 427.1	1 994.0	102.1	4.9	66.0	1 424.6	1 991.7	102.0	4.9	65.9	3 178.6

LABOUR FORCE STATUS (AGED 15 YEARS & OVER)—South Australia

	TREND					SEASONALLY ADJUSTED					Civilian population aged 15 years and over '000
	Employed full time	Total employed	Total unemp-loyed	Unemp-loyment rate	Partici-pation rate	Employed full time	Total employed	Total unemp-loyed	Unemp-loyment rate	Partici-pation rate	
	'000	'000	'000	%	%	'000	'000	'000	%	%	
MALES											
December 2002	333.0	389.4	27.0	6.5	69.0	334.1	389.7	24.8	6.0	68.7	603.5
December 2003	334.4	396.3	27.9	6.6	69.6	335.3	398.1	29.8	7.0	70.2	609.3
2004											
December	338.2	401.8	24.3	5.7	69.3	337.5	402.3	23.3	5.5	69.2	614.8
2005											
January	340.0	402.5	23.9	5.6	69.3	334.8	397.9	26.5	6.3	69.0	615.1
February	341.6	403.5	23.5	5.5	69.4	342.3	403.2	24.4	5.7	69.5	615.4
March	342.9	404.6	22.9	5.4	69.4	348.3	407.1	22.9	5.3	69.8	615.8
April	343.6	405.6	22.2	5.2	69.4	342.8	405.8	21.2	5.0	69.3	616.2
May	343.8	406.2	21.7	5.1	69.4	344.4	407.1	21.2	4.9	69.5	616.6
June	343.3	406.2	21.7	5.1	69.4	342.0	406.2	21.3	5.0	69.3	617.0
July	342.6	405.8	22.2	5.2	69.3	340.3	405.1	22.2	5.2	69.2	617.4
August	342.3	405.3	22.7	5.3	69.3	344.0	404.5	22.9	5.4	69.2	617.9
September	342.5	405.1	23.1	5.4	69.2	343.3	406.1	23.5	5.5	69.5	618.4
October	342.7	405.0	23.1	5.4	69.2	342.2	404.5	24.5	5.7	69.3	619.0
November	342.9	405.0	23.0	5.4	69.1	341.2	404.7	22.6	5.3	69.0	619.6
December	343.2	405.0	22.7	5.3	69.0	344.7	405.6	21.0	4.9	68.8	620.2
FEMALES											
December 2002	160.0	317.0	19.3	5.7	53.5	159.0	314.8	18.5	5.5	53.0	628.6
December 2003	156.0	319.4	22.7	6.6	54.0	156.6	319.0	22.7	6.6	53.9	633.6
2004											
December	165.6	327.5	17.3	5.0	54.1	164.3	327.9	16.8	4.9	54.0	638.0
2005											
January	166.4	329.2	17.4	5.0	54.3	168.6	330.1	17.6	5.1	54.5	638.1
February	167.0	330.8	17.6	5.1	54.6	166.0	331.9	16.8	4.8	54.6	638.2
March	167.5	332.2	17.8	5.1	54.8	167.3	331.8	17.6	5.0	54.7	638.4
April	168.2	333.5	17.7	5.0	55.0	168.0	332.1	19.6	5.6	55.1	638.7
May	168.8	334.6	17.3	4.9	55.1	168.7	334.5	17.1	4.9	55.0	639.0
June	169.2	335.4	16.5	4.7	55.1	168.5	335.4	17.5	5.0	55.2	639.3
July	169.1	336.0	15.7	4.5	55.0	170.1	338.3	13.9	3.9	55.0	639.7
August	168.9	336.3	15.2	4.3	54.9	171.5	336.9	15.0	4.3	55.0	640.1
September	168.7	336.6	15.2	4.3	54.9	168.9	335.4	15.5	4.4	54.8	640.5
October	168.6	336.9	15.5	4.4	55.0	162.1	334.5	15.1	4.3	54.5	641.0
November	168.7	337.3	16.0	4.5	55.1	171.5	338.2	14.9	4.2	55.1	641.5
December	168.9	337.7	16.6	4.7	55.2	170.7	339.3	19.1	5.3	55.8	642.0
PERSONS											
December 2002	493.0	706.3	46.3	6.2	61.1	493.1	704.4	43.3	5.8	60.7	1 232.2
December 2003	490.4	715.7	50.6	6.6	61.7	491.9	717.1	52.5	6.8	61.9	1 242.9
2004											
December	503.9	729.3	41.6	5.4	61.5	501.9	730.2	40.1	5.2	61.5	1 252.8
2005											
January	506.4	731.7	41.3	5.3	61.7	503.4	727.9	44.1	5.7	61.6	1 253.2
February	508.6	734.3	41.1	5.3	61.8	508.3	735.2	41.2	5.3	61.9	1 253.7
March	510.4	736.8	40.7	5.2	62.0	515.7	738.9	40.6	5.2	62.2	1 254.1
April	511.9	739.1	39.9	5.1	62.1	510.7	737.9	40.7	5.2	62.0	1 254.9
May	512.6	740.8	39.0	5.0	62.1	513.1	741.5	38.3	4.9	62.1	1 255.6
June	512.5	741.7	38.2	4.9	62.1	510.5	741.6	38.8	5.0	62.1	1 256.3
July	511.8	741.8	37.9	4.9	62.0	510.4	743.3	36.1	4.6	62.0	1 257.1
August	511.3	741.7	38.0	4.9	62.0	515.5	741.4	37.8	4.9	61.9	1 258.0
September	511.1	741.7	38.3	4.9	61.9	512.2	741.5	39.0	5.0	62.0	1 258.9
October	511.2	741.9	38.6	4.9	61.9	504.3	739.0	39.6	5.1	61.8	1 260.0
November	511.5	742.2	39.0	5.0	62.0	512.8	742.9	37.6	4.8	61.9	1 261.1
December	512.1	742.7	39.3	5.0	62.0	515.4	744.9	40.1	5.1	62.2	1 262.2

LABOUR FORCE STATUS (AGED 15 YEARS & OVER)—Western Australia

	TREND					SEASONALLY ADJUSTED					Civilian population aged 15 years and over
	Employed full time	Total employed	Total unemployed	Unemployment rate	Participation rate	Employed full time	Total employed	Total unemployed	Unemployment rate	Participation rate	
	'000	'000	'000	%	%	'000	'000	'000	%	%	
MALES											
December 2002	451.3	533.9	37.3	6.5	74.9	451.1	533.9	37.4	6.6	74.9	762.3
December 2003	470.6	550.5	32.2	5.5	74.9	473.8	556.7	30.6	5.2	75.5	778.0
2004											
December	485.3	567.8	25.0	4.2	74.6	482.5	565.2	25.4	4.3	74.3	794.4
2005											
January	489.7	571.6	25.0	4.2	75.0	492.8	572.4	24.2	4.1	75.0	795.2
February	493.2	574.8	25.3	4.2	75.4	492.3	573.0	25.1	4.2	75.1	796.1
March	495.8	577.5	25.8	4.3	75.7	496.5	580.1	27.2	4.5	76.2	797.0
April	498.0	580.0	26.5	4.4	76.0	499.6	579.6	25.5	4.2	75.8	798.1
May	500.1	582.5	26.9	4.4	76.3	502.8	584.7	25.3	4.1	76.3	799.1
June	502.0	584.8	26.9	4.4	76.4	492.3	580.8	29.2	4.8	76.2	800.2
July	503.6	586.8	26.3	4.3	76.5	504.5	586.1	27.4	4.5	76.5	801.7
August	504.9	588.7	25.4	4.1	76.5	512.1	589.2	25.6	4.2	76.6	803.1
September	505.6	590.3	24.4	4.0	76.4	507.5	595.8	23.0	3.7	76.9	804.6
October	505.9	591.6	23.7	3.8	76.3	502.1	589.0	22.8	3.7	75.9	806.0
November	505.9	592.5	23.2	3.8	76.3	503.7	590.3	22.1	3.6	75.9	807.3
December	506.1	593.3	22.7	3.7	76.2	506.6	594.1	25.2	4.1	76.6	808.7
FEMALES											
December 2002	210.7	423.4	24.9	5.5	58.0	213.3	425.3	27.2	6.0	58.5	773.3
December 2003	216.3	420.1	29.2	6.5	56.9	216.6	420.9	30.3	6.7	57.2	789.5
2004											
December	229.3	443.6	23.7	5.1	58.1	225.2	441.3	21.7	4.7	57.5	804.9
2005											
January	231.1	446.1	24.2	5.2	58.4	230.6	444.6	25.4	5.4	58.3	805.6
February	232.7	448.7	25.0	5.3	58.7	234.6	449.7	24.4	5.2	58.8	806.3
March	234.5	451.7	25.6	5.4	59.1	235.5	451.8	27.3	5.7	59.4	807.1
April	236.6	455.0	25.9	5.4	59.5	236.7	453.7	26.2	5.5	59.4	808.1
May	238.6	458.0	25.6	5.3	59.8	234.9	460.0	24.8	5.1	59.9	809.1
June	239.9	460.3	24.8	5.1	59.9	239.0	459.6	24.9	5.1	59.8	810.1
July	240.0	461.7	23.8	4.9	59.8	243.8	461.5	24.6	5.1	59.9	811.5
August	239.2	462.4	22.9	4.7	59.7	242.5	465.3	22.4	4.6	60.0	812.9
September	237.7	462.6	22.2	4.6	59.6	239.9	461.2	22.1	4.6	59.3	814.3
October	236.0	462.5	21.7	4.5	59.4	228.7	462.4	20.7	4.3	59.3	815.3
November	234.5	462.3	21.4	4.4	59.3	233.2	462.0	21.6	4.5	59.3	816.2
December	233.0	462.2	21.1	4.4	59.2	236.0	461.8	22.0	4.6	59.2	817.1
PERSONS											
December 2002	662.0	957.2	62.2	6.1	66.4	664.4	959.2	64.6	6.3	66.7	1 535.6
December 2003	686.8	970.5	61.3	5.9	65.8	690.4	977.6	60.9	5.9	66.3	1 567.5
2004											
December	714.6	1 011.4	48.7	4.6	66.3	707.7	1 006.5	47.1	4.5	65.9	1 599.2
2005											
January	720.8	1 017.7	49.3	4.6	66.6	723.4	1 017.0	49.5	4.6	66.6	1 600.9
February	725.9	1 023.5	50.3	4.7	67.0	726.9	1 022.6	49.6	4.6	66.9	1 602.5
March	730.3	1 029.2	51.5	4.8	67.4	732.0	1 031.9	54.4	5.0	67.7	1 604.1
April	734.6	1 035.0	52.4	4.8	67.7	736.3	1 033.3	51.7	4.8	67.6	1 606.2
May	738.7	1 040.5	52.5	4.8	68.0	737.8	1 044.7	50.0	4.6	68.1	1 608.2
June	741.9	1 045.1	51.7	4.7	68.1	731.3	1 040.4	54.2	4.9	68.0	1 610.3
July	743.7	1 048.6	50.1	4.6	68.1	748.3	1 047.6	52.0	4.7	68.2	1 613.2
August	744.1	1 051.1	48.3	4.4	68.0	754.6	1 054.5	48.0	4.4	68.2	1 616.0
September	743.3	1 052.9	46.7	4.2	67.9	747.4	1 057.0	45.1	4.1	68.1	1 618.9
October	741.9	1 054.1	45.4	4.1	67.8	730.8	1 051.4	43.4	4.0	67.5	1 621.2
November	740.4	1 054.8	44.5	4.1	67.7	736.9	1 052.3	43.7	4.0	67.5	1 623.5
December	739.1	1 055.5	43.9	4.0	67.7	742.5	1 055.9	47.2	4.3	67.9	1 625.8

	TREND					SEASONALLY ADJUSTED					Civilian population aged 15 years and over '000
	Employed full time	Total employed	Total unemp-loyed	Unemp-loyment rate	Partici-pation rate	Employed full time	Total employed	Total unemp-loyed	Unemp-loyment rate	Partici-pation rate	
	'000	'000	'000	%	%	'000	'000	'000	%	%	
MALES											
December 2002	95.3	111.3	12.0	9.7	67.0	95.2	111.6	13.2	10.6	67.9	184.0
December 2003	98.2	114.7	9.7	7.8	66.7	96.9	114.0	9.1	7.4	66.0	186.6
2004											
December	98.7	117.4	7.4	5.9	65.9	99.0	116.3	7.6	6.2	65.4	189.4
2005											
January	98.7	117.6	7.3	5.8	65.9	98.0	116.8	6.6	5.4	65.1	189.6
February	98.8	118.0	7.4	5.9	66.1	99.3	118.4	7.2	5.7	66.2	189.8
March	98.8	118.5	7.6	6.0	66.4	99.4	119.5	7.9	6.2	67.1	189.9
April	98.7	118.8	7.7	6.1	66.6	98.8	118.5	8.7	6.8	66.9	190.1
May	98.6	119.0	7.8	6.1	66.6	98.1	119.0	7.4	5.8	66.5	190.2
June	98.5	119.1	7.8	6.1	66.6	99.2	120.0	7.5	5.9	67.0	190.4
July	98.7	119.3	7.8	6.2	66.7	97.7	118.0	7.9	6.3	66.1	190.5
August	99.2	119.8	8.0	6.2	67.0	99.2	119.7	7.6	6.0	66.8	190.7
September	100.0	120.6	8.2	6.4	67.5	99.9	120.1	8.2	6.4	67.2	190.9
October	100.9	121.5	8.5	6.5	68.1	100.6	121.3	8.8	6.8	68.1	191.0
November	101.7	122.5	8.7	6.7	68.7	102.1	123.0	8.9	6.8	69.0	191.0
December	102.4	123.4	8.9	6.7	69.3	103.1	124.6	8.8	6.6	69.8	191.1
FEMALES											
December 2002	44.4	89.7	7.9	8.1	50.5	45.6	90.6	8.3	8.4	51.2	193.2
December 2003	46.9	95.3	6.2	6.1	51.8	48.0	94.8	6.8	6.7	51.9	196.0
2004											
December	48.0	98.2	5.8	5.6	52.4	47.6	97.6	5.5	5.3	51.9	198.6
2005											
January	48.4	98.6	5.9	5.6	52.6	49.1	99.0	6.0	5.7	52.8	198.7
February	48.8	98.9	6.0	5.7	52.8	48.6	99.9	5.6	5.3	53.0	198.9
March	49.2	99.1	6.1	5.8	52.9	49.5	99.2	6.0	5.7	52.9	199.0
April	49.7	99.4	6.0	5.7	52.9	48.8	99.0	7.2	6.8	53.3	199.1
May	50.4	99.7	6.0	5.7	53.1	50.2	98.8	5.6	5.4	52.4	199.2
June	50.9	100.2	6.0	5.7	53.3	50.8	99.8	5.8	5.5	53.0	199.4
July	51.1	100.6	6.3	5.9	53.6	52.2	101.4	5.7	5.3	53.7	199.5
August	50.9	101.0	6.6	6.1	53.9	51.4	101.6	6.3	5.9	54.1	199.6
September	50.4	101.2	7.0	6.4	54.1	51.6	101.6	6.6	6.1	54.2	199.7
October	49.6	101.2	7.2	6.7	54.2	47.3	100.2	9.0	8.3	54.7	199.8
November	48.9	101.1	7.4	6.8	54.3	49.4	101.1	8.0	7.4	54.6	199.9
December	48.3	101.0	7.3	6.8	54.2	47.9	100.9	5.4	5.1	53.2	200.0
PERSONS											
December 2002	139.8	201.1	20.0	9.0	58.6	140.7	202.2	21.6	9.6	59.3	377.2
December 2003	145.1	210.0	15.9	7.0	59.0	144.9	208.9	15.9	7.1	58.7	382.6
2004											
December	146.6	215.6	13.2	5.8	59.0	146.6	213.9	13.1	5.8	58.5	388.1
2005											
January	147.1	216.3	13.2	5.8	59.1	147.1	215.8	12.6	5.5	58.8	388.3
February	147.5	217.0	13.4	5.8	59.3	147.9	218.3	12.8	5.5	59.5	388.6
March	147.9	217.6	13.6	5.9	59.5	148.9	218.8	13.8	5.9	59.8	388.9
April	148.5	218.2	13.7	5.9	59.6	147.6	217.4	15.9	6.8	60.0	389.2
May	149.0	218.7	13.7	5.9	59.7	148.3	217.9	13.0	5.6	59.3	389.5
June	149.4	219.3	13.8	5.9	59.8	150.0	219.8	13.3	5.7	59.8	389.7
July	149.8	219.9	14.1	6.0	60.0	149.9	219.4	13.6	5.8	59.7	390.0
August	150.2	220.8	14.6	6.2	60.3	150.6	221.4	13.9	5.9	60.3	390.3
September	150.4	221.7	15.2	6.4	60.7	151.5	221.8	14.7	6.2	60.6	390.6
October	150.5	222.7	15.7	6.6	61.0	148.0	221.5	17.8	7.5	61.3	390.8
November	150.6	223.6	16.1	6.7	61.3	151.5	224.1	17.0	7.0	61.7	390.9
December	150.7	224.4	16.2	6.8	61.5	151.0	225.5	14.2	5.9	61.3	391.1

	TREND					Civilian population aged 15 years and over
	Employed full time	Total employed	Total unemployed	Unemployment rate	Participation rate	
	'000	'000	'000	%	%	
MALES						
December 2002	45.1	54.2	3.4	5.9	78.1	73.6
December 2003	43.5	53.8	2.5	4.4	76.3	73.7
2004						
December	43.7	51.1	4.0	7.2	73.7	74.7
2005						
January	43.9	51.3	3.9	7.0	73.6	74.9
February	43.7	51.3	3.8	6.8	73.3	75.2
March	43.4	51.1	3.6	6.5	72.7	75.4
April	42.9	50.9	3.3	6.1	71.9	75.4
May	42.5	50.7	3.0	5.6	71.2	75.4
June	42.3	50.8	2.7	5.1	70.9	75.4
July	42.5	51.1	2.6	4.8	71.0	75.6
August	42.9	51.7	2.6	4.7	71.7	75.8
September	43.4	52.4	2.7	4.9	72.4	75.9
October	44.0	53.0	2.8	5.1	73.3	76.2
November	44.7	53.6	3.0	5.3	74.0	76.5
December	45.3	54.0	3.2	5.6	74.7	76.7
FEMALES						
December 2002	30.0	44.7	2.4	5.1	68.0	69.2
December 2003	28.8	43.1	2.4	5.2	65.4	69.4
2004						
December	29.5	43.5	2.4	5.2	65.5	70.2
2005						
January	29.4	43.3	2.3	5.0	64.9	70.2
February	29.3	43.0	2.2	4.9	64.3	70.3
March	29.3	42.8	2.2	4.9	63.9	70.4
April	29.7	42.8	2.2	4.9	63.9	70.5
May	30.3	43.1	2.2	4.9	64.2	70.6
June	30.9	43.6	2.1	4.7	64.7	70.7
July	31.4	44.1	2.1	4.5	65.1	70.9
August	31.5	44.4	2.1	4.6	65.4	71.0
September	31.4	44.4	2.2	4.8	65.4	71.2
October	31.1	44.3	2.4	5.1	65.3	71.4
November	30.7	44.1	2.6	5.5	65.2	71.7
December	30.4	44.0	2.8	5.9	65.2	71.9
PERSONS						
December 2002	75.1	98.9	5.8	5.5	73.2	142.8
December 2003	72.3	96.8	4.9	4.8	71.0	143.1
2004						
December	73.2	94.7	6.4	6.3	69.7	144.8
2005						
January	73.3	94.6	6.1	6.1	69.4	145.2
February	73.1	94.3	5.9	5.9	69.0	145.5
March	72.7	93.9	5.8	5.8	68.5	145.8
April	72.5	93.7	5.6	5.6	68.0	145.9
May	72.8	93.8	5.2	5.3	67.8	146.0
June	73.3	94.4	4.9	4.9	67.9	146.1
July	73.9	95.2	4.7	4.7	68.2	146.4
August	74.4	96.1	4.7	4.7	68.6	146.8
September	74.8	96.8	4.9	4.8	69.0	147.1
October	75.1	97.3	5.2	5.1	69.4	147.6
November	75.4	97.7	5.6	5.4	69.8	148.1
December	75.7	98.0	6.0	5.8	70.1	148.6

	TREND					<i>Civilian population aged 15 years and over</i>
	<i>Employed full time</i>	<i>Total employed</i>	<i>Total unemployed</i>	<i>Unemployment rate</i>	<i>Participation rate</i>	
	'000	'000	'000	%	%	
MALES						
December 2002	78.4	91.3	4.8	5.0	78.4	122.7
December 2003	75.3	92.0	3.8	4.0	77.3	124.1
2004						
December	79.5	92.7	4.4	4.5	77.6	125.1
2005						
January	79.7	93.4	4.1	4.2	77.9	125.2
February	79.6	93.8	3.8	3.9	77.9	125.3
March	79.4	94.0	3.5	3.6	77.7	125.4
April	79.3	94.0	3.3	3.4	77.4	125.6
May	79.4	94.0	3.1	3.2	77.2	125.8
June	79.5	94.0	3.0	3.1	77.1	126.0
July	79.6	94.1	3.0	3.1	77.0	126.0
August	79.5	94.1	3.0	3.1	77.0	126.1
September	79.2	94.2	3.0	3.1	77.0	126.1
October	79.0	94.2	3.0	3.1	76.9	126.3
November	78.7	94.3	2.9	3.0	76.9	126.4
December	78.5	94.3	2.9	3.0	76.9	126.5
FEMALES						
December 2002	54.8	85.3	3.1	3.5	67.6	130.8
December 2003	52.9	84.4	3.3	3.7	66.4	132.1
2004						
December	53.2	87.3	2.7	3.0	68.0	132.4
2005						
January	53.9	87.7	2.6	2.9	68.1	132.5
February	54.7	87.7	2.6	2.9	68.2	132.5
March	55.3	87.5	2.7	3.0	68.1	132.6
April	55.6	87.2	2.8	3.1	67.9	132.6
May	55.6	86.9	2.9	3.2	67.7	132.7
June	55.3	86.8	2.9	3.2	67.6	132.7
July	54.8	86.6	2.9	3.3	67.4	132.8
August	54.2	86.4	3.0	3.4	67.3	132.9
September	53.6	86.0	3.1	3.5	67.0	132.9
October	53.2	85.5	3.2	3.6	66.6	133.1
November	52.8	85.0	3.2	3.7	66.3	133.2
December	52.5	84.6	3.3	3.7	65.9	133.3
PERSONS						
December 2002	133.2	176.6	7.9	4.3	72.8	253.4
December 2003	128.2	176.4	7.1	3.9	71.6	256.2
2004						
December	132.8	180.0	7.0	3.8	72.7	257.5
2005						
January	133.6	181.0	6.7	3.6	72.9	257.7
February	134.3	181.5	6.4	3.4	72.9	257.8
March	134.7	181.4	6.3	3.3	72.7	257.9
April	135.0	181.2	6.1	3.2	72.5	258.2
May	135.0	180.9	5.9	3.2	72.3	258.4
June	134.8	180.8	5.9	3.2	72.2	258.7
July	134.4	180.7	5.9	3.2	72.1	258.8
August	133.7	180.5	6.0	3.2	72.0	258.9
September	132.9	180.1	6.1	3.3	71.8	259.1
October	132.1	179.7	6.1	3.3	71.6	259.3
November	131.6	179.3	6.2	3.3	71.5	259.6
December	131.0	178.9	6.2	3.3	71.3	259.8

	EMPLOYED			UNEMPLOYED		Labour force	Not in labour force	Civilian population aged 15 years and over	UNEMPLOYMENT RATE		Participation rate
	Full time	Part time	Total	Looking for f/t work	Total				Looking for f/t work	Total	
	'000	'000	'000	'000	'000				'000	'000	
MALES											
New South Wales	1 546.2	262.2	1 808.4	85.6	107.2	1 915.6	778.6	2 694.2	5.2	5.6	71.1
Victoria	1 176.8	202.2	1 379.0	56.7	75.0	1 454.0	546.9	2 000.8	4.6	5.2	72.7
Queensland	958.8	154.0	1 112.8	38.7	52.9	1 165.7	406.8	1 572.5	3.9	4.5	74.1
South Australia	350.6	61.3	411.9	15.1	20.5	432.4	187.7	620.2	4.1	4.7	69.7
Western Australia	515.3	86.3	601.6	18.4	23.7	625.3	183.4	808.7	3.5	3.8	77.3
Tasmania	105.8	20.6	126.4	7.3	8.4	134.9	56.3	191.1	6.4	6.3	70.6
Northern Territory	47.1	7.4	54.5	*2.7	4.1	58.7	18.1	76.7	*5.5	7.1	76.4
Australian Capital Territory	80.6	16.5	97.1	1.8	2.8	99.9	26.7	126.5	2.2	2.8	78.9
Australia	4 781.1	810.6	5 591.7	226.5	294.6	5 886.3	2 204.4	8 090.8	4.5	5.0	72.8
FEMALES											
New South Wales	845.3	636.8	1 482.1	49.8	77.3	1 559.5	1 219.6	2 779.0	5.6	5.0	56.1
Victoria	607.0	531.2	1 138.2	40.0	68.0	1 206.2	887.7	2 093.9	6.2	5.6	57.6
Queensland	492.5	409.1	901.6	30.3	49.3	950.9	655.2	1 606.1	5.8	5.2	59.2
South Australia	173.7	168.7	342.4	10.6	18.0	360.4	281.6	642.0	5.7	5.0	56.1
Western Australia	244.4	225.5	469.9	13.5	22.9	492.8	324.2	817.1	5.2	4.6	60.3
Tasmania	49.0	53.9	102.8	3.4	5.4	108.2	91.8	200.0	6.6	5.0	54.1
Northern Territory	30.8	13.8	44.7	*1.6	3.3	48.0	23.9	71.9	*4.8	7.0	66.8
Australian Capital Territory	55.5	30.5	86.0	1.5	2.8	88.8	44.5	133.3	2.7	3.2	66.6
Australia	2 498.3	2 069.5	4 567.8	150.7	247.1	4 814.9	3 528.4	8 343.3	5.7	5.1	57.7
PERSONS											
New South Wales	2 391.5	899.0	3 290.6	135.5	184.5	3 475.1	1 998.2	5 473.3	5.4	5.3	63.5
Victoria	1 783.8	733.4	2 517.2	96.7	143.0	2 660.2	1 434.5	4 094.7	5.1	5.4	65.0
Queensland	1 451.3	563.1	2 014.4	69.0	102.1	2 116.6	1 062.0	3 178.6	4.5	4.8	66.6
South Australia	524.3	230.0	754.3	25.7	38.5	792.8	469.3	1 262.2	4.7	4.9	62.8
Western Australia	759.7	311.8	1 071.5	31.9	46.6	1 118.1	507.7	1 625.8	4.0	4.2	68.8
Tasmania	154.8	74.5	229.3	10.7	13.8	243.1	148.0	391.1	6.5	5.7	62.2
Northern Territory	77.9	21.3	99.2	4.3	7.5	106.7	42.0	148.6	5.2	7.0	71.8
Australian Capital Territory	136.1	47.0	183.1	3.4	5.6	188.7	71.2	259.8	2.4	3.0	72.6
Australia	7 279.5	2 880.1	10 159.5	377.2	541.7	10 701.2	5 732.8	16 434.1	4.9	5.1	65.1

* estimate is subject to sampling variability too high for most practical purposes

	EMPLOYED		UNEMPLOYED		UNEMPLOYMENT RATE		Participation rate	Employment to population ratio	Unemployment to population ratio – looking for full-time work
	Full time	Total	Looking for f/t work	Total	Looking for f/t work	Total			
	'000	'000	'000	'000	%	%			
MALES									
December 2002	140.9	335.9	38.0	72.7	21.2	17.8	58.7	48.2	5.5
December 2003	155.1	353.2	34.4	65.6	18.1	15.7	59.4	50.0	4.9
2004									
December	157.8	354.8	34.9	66.6	18.1	15.8	59.1	49.8	4.9
2005									
January	161.2	359.5	34.8	65.9	17.8	15.5	59.7	50.4	4.9
February	163.7	363.9	34.7	65.4	17.5	15.2	60.2	51.0	4.9
March	164.9	366.6	34.6	65.3	17.3	15.1	60.5	51.4	4.8
April	165.1	367.4	34.7	65.1	17.4	15.1	60.6	51.5	4.9
May	164.3	365.8	35.0	65.2	17.6	15.1	60.4	51.2	4.9
June	163.0	362.3	35.7	65.7	17.9	15.4	59.9	50.7	5.0
July	161.5	357.7	36.4	66.6	18.4	15.7	59.4	50.1	5.1
August	159.8	353.3	36.9	67.6	18.7	16.1	58.9	49.4	5.2
September	158.0	349.8	37.1	68.6	19.0	16.4	58.5	48.9	5.2
October	156.3	347.0	37.2	69.4	19.2	16.7	58.2	48.5	5.2
November	154.9	345.0	37.1	69.9	19.3	16.9	58.0	48.2	5.2
December	153.7	343.7	36.9	70.4	19.4	17.0	57.9	48.0	5.2
FEMALES									
December 2002	79.1	346.8	27.7	63.1	25.9	15.4	61.3	51.9	4.1
December 2003	81.1	350.3	28.6	63.9	26.1	15.4	61.1	51.7	4.2
2004									
December	88.8	355.5	25.7	60.1	22.5	14.5	60.8	52.0	3.8
2005									
January	87.8	357.0	26.2	59.3	23.0	14.2	60.9	52.2	3.8
February	86.9	358.8	26.7	59.0	23.5	14.1	61.1	52.5	3.9
March	86.3	361.1	27.0	59.3	23.9	14.1	61.5	52.8	4.0
April	85.9	363.8	27.1	60.1	24.0	14.2	62.0	53.2	4.0
May	85.5	366.1	27.0	61.4	24.0	14.4	62.5	53.5	3.9
June	85.1	367.3	27.0	63.0	24.1	14.6	62.9	53.7	3.9
July	84.4	367.0	27.0	64.3	24.3	14.9	63.0	53.6	4.0
August	83.4	365.0	27.0	65.0	24.5	15.1	62.9	53.4	3.9
September	82.5	362.0	27.0	65.4	24.6	15.3	62.5	52.9	3.9
October	81.5	358.8	26.8	65.2	24.8	15.4	62.0	52.4	3.9
November	80.6	355.8	26.6	64.9	24.8	15.4	61.5	52.0	3.9
December	79.7	353.0	26.3	64.2	24.8	15.4	60.9	51.6	3.8
PERSONS									
December 2002	220.0	682.7	65.7	135.8	23.0	16.6	60.0	50.0	4.8
December 2003	236.2	703.5	63.0	129.6	21.0	15.6	60.2	50.8	4.6
2004									
December	246.6	710.2	60.6	126.8	19.7	15.1	59.9	50.9	4.3
2005									
January	249.0	716.4	61.0	125.2	19.7	14.9	60.3	51.3	4.4
February	250.6	722.7	61.4	124.4	19.7	14.7	60.6	51.7	4.4
March	251.2	727.8	61.6	124.6	19.7	14.6	61.0	52.1	4.4
April	251.0	731.2	61.8	125.2	19.8	14.6	61.3	52.3	4.4
May	249.8	731.9	62.0	126.6	19.9	14.7	61.4	52.3	4.4
June	248.1	729.6	62.6	128.7	20.2	15.0	61.4	52.2	4.5
July	245.9	724.7	63.4	130.9	20.5	15.3	61.2	51.8	4.5
August	243.3	718.3	63.9	132.6	20.8	15.6	60.8	51.4	4.6
September	240.5	711.8	64.1	134.0	21.0	15.8	60.5	50.9	4.6
October	237.8	705.8	64.0	134.6	21.2	16.0	60.1	50.4	4.6
November	235.5	700.8	63.7	134.8	21.3	16.1	59.7	50.1	4.5
December	233.4	696.7	63.2	134.5	21.3	16.2	59.4	49.7	4.5

	EMPLOYED		UNEMPLOYED		UNEMPLOYMENT RATE		Participation rate	Employment to population ratio	Unemployment to population ratio – looking for full-time work
	Full time	Total	Looking for f/t work	Total	Looking for f/t work	Total			
	'000	'000	'000	'000	%	%			
MALES									
December 2002	142.4	335.6	38.3	73.3	21.2	17.9	58.7	48.2	5.5
December 2003	154.1	355.2	33.5	64.5	17.9	15.4	59.5	50.3	4.7
2004									
December	154.3	354.4	36.7	67.2	19.2	15.9	59.2	49.7	5.2
2005									
January	168.8	359.9	35.3	65.1	17.3	15.3	59.6	50.5	4.9
February	164.1	364.1	34.7	66.7	17.5	15.5	60.4	51.1	4.9
March	163.2	368.2	32.9	64.2	16.8	14.8	60.6	51.6	4.6
April	164.6	369.3	34.5	64.2	17.3	14.8	60.7	51.7	4.8
May	164.0	366.6	36.3	67.6	18.1	15.6	60.8	51.3	5.1
June	163.5	364.3	35.6	65.0	17.9	15.1	60.1	51.0	5.0
July	161.6	353.0	34.8	66.2	17.7	15.8	58.7	49.4	4.9
August	161.0	355.0	37.9	65.3	19.1	15.5	58.8	49.7	5.3
September	159.3	351.8	37.3	68.1	19.0	16.2	58.8	49.2	5.2
October	149.0	337.4	38.0	75.7	20.3	18.3	57.8	47.2	5.3
November	161.6	351.3	37.3	67.2	18.7	16.1	58.5	49.1	5.2
December	151.3	344.2	35.4	68.9	19.0	16.7	57.7	48.1	4.9
FEMALES									
December 2002	79.6	347.4	23.7	58.6	23.0	14.4	60.7	51.9	3.5
December 2003	81.2	348.6	28.9	65.2	26.2	15.8	61.0	51.4	4.3
2004									
December	90.6	357.6	30.6	68.1	25.2	16.0	62.2	52.3	4.5
2005									
January	85.3	354.7	23.4	53.1	21.6	13.0	59.6	51.9	3.4
February	85.9	361.5	28.0	57.1	24.6	13.6	61.2	52.9	4.1
March	86.9	359.5	26.0	62.2	23.0	14.8	61.7	52.6	3.8
April	87.2	361.3	28.9	61.7	24.9	14.6	61.8	52.8	4.2
May	83.7	364.6	26.3	58.7	23.9	13.9	61.9	53.3	3.8
June	86.7	373.7	26.7	59.5	23.5	13.7	63.3	54.6	3.9
July	83.8	366.0	27.4	71.1	24.6	16.3	63.9	53.5	4.0
August	82.9	366.7	25.2	62.1	23.3	14.5	62.7	53.6	3.7
September	84.1	363.8	28.2	66.0	25.1	15.4	62.8	53.2	4.1
October	80.8	352.6	28.9	67.5	26.4	16.1	61.4	51.5	4.2
November	79.8	359.2	25.2	63.1	24.0	14.9	61.7	52.5	3.7
December	79.7	350.8	25.4	62.6	24.1	15.1	60.4	51.2	3.7
PERSONS									
December 2002	222.0	683.0	62.0	131.9	21.8	16.2	59.7	50.0	4.5
December 2003	235.4	703.8	62.4	129.7	21.0	15.6	60.2	50.9	4.5
2004									
December	244.9	712.0	67.3	135.3	21.6	16.0	60.7	51.0	4.8
2005									
January	254.1	714.6	58.7	118.2	18.8	14.2	59.6	51.2	4.2
February	250.0	725.6	62.7	123.8	20.0	14.6	60.8	51.9	4.5
March	250.2	727.7	58.9	126.4	19.1	14.8	61.1	52.1	4.2
April	251.8	730.6	63.3	125.9	20.1	14.7	61.3	52.3	4.5
May	247.7	731.2	62.6	126.3	20.2	14.7	61.3	52.3	4.5
June	250.2	738.0	62.3	124.5	19.9	14.4	61.7	52.8	4.5
July	245.4	719.0	62.2	137.3	20.2	16.0	61.2	51.4	4.4
August	243.9	721.7	63.2	127.4	20.6	15.0	60.7	51.6	4.5
September	243.4	715.6	65.5	134.1	21.2	15.8	60.7	51.2	4.7
October	229.8	690.0	66.9	143.2	22.5	17.2	59.5	49.3	4.8
November	241.4	710.5	62.4	130.3	20.6	15.5	60.1	50.8	4.5
December	231.0	695.0	60.7	131.5	20.8	15.9	59.0	49.6	4.3

	EMPLOYED			UNEMPLOYED			Civilian population aged 15–19 years	UNEMPLOYMENT RATE		Participation rate	Unemployment to population ratio – looking for full-time work	
	Full time	Part time	Total	Looking for f/t work	Total	Labour force		Not in labour force	Looking for f/t work			Total
	'000	'000	'000	'000	'000	'000	'000	'000	%	%	%	%
NOT ATTENDING FULL-TIME EDUCATION												
Males												
December 2002	142.8	68.5	211.3	36.0	43.0	254.4	44.5	298.9	20.1	16.9	85.1	12.0
December 2003	149.8	71.9	221.7	32.6	38.7	260.4	47.0	307.4	17.9	14.9	84.7	10.6
December 2004	153.1	68.1	221.2	36.9	45.0	266.2	44.2	310.4	19.4	16.9	85.8	11.9
December 2005	149.0	67.7	216.6	30.7	40.2	256.9	46.8	303.7	17.1	15.7	84.6	10.1
Females												
December 2002	78.6	98.7	177.2	23.3	31.8	209.0	51.8	260.8	22.8	15.2	80.1	8.9
December 2003	82.7	98.7	181.4	27.1	34.5	216.0	50.1	266.1	24.7	16.0	81.2	10.2
December 2004	91.5	93.6	185.1	27.5	37.5	222.7	47.3	270.0	23.1	16.9	82.5	10.2
December 2005	76.7	95.9	172.6	21.2	30.7	203.3	51.6	255.0	21.7	15.1	79.7	8.3
Persons												
December 2002	221.3	167.2	388.6	59.2	74.8	463.3	96.3	559.7	21.1	16.1	82.8	10.6
December 2003	232.5	170.6	403.1	59.6	73.2	476.4	97.1	573.5	20.4	15.4	83.1	10.4
December 2004	244.6	161.7	406.3	64.4	82.5	488.9	91.6	580.4	20.8	16.9	84.2	11.1
December 2005	225.7	163.5	389.2	51.9	71.0	460.2	98.4	558.6	18.7	15.4	82.4	9.3
ATTENDING FULL-TIME EDUCATION												
Males												
December 2002	15.5	134.9	150.4	9.1	42.2	192.7	205.2	397.9	37.1	21.9	48.4	2.3
December 2003	21.2	139.8	161.0	6.8	35.9	197.0	201.5	398.4	24.3	18.2	49.4	1.7
December 2004	17.3	143.5	160.8	6.1	32.7	193.5	208.6	402.1	26.0	16.9	48.1	1.5
December 2005	17.8	137.1	154.8	10.7	39.4	194.3	218.0	412.2	37.6	20.3	47.1	2.6
Females												
December 2002	11.8	182.3	194.0	*4.7	35.9	230.0	178.0	408.0	*28.6	15.6	56.4	*1.2
December 2003	10.0	180.0	190.0	6.4	40.5	230.4	181.5	412.0	39.2	17.6	55.9	1.6
December 2004	12.2	182.6	194.7	7.6	40.5	235.2	178.7	413.9	38.5	17.2	56.8	1.8
December 2005	14.8	184.9	199.6	7.9	41.0	240.6	189.0	429.6	35.0	17.0	56.0	1.8
Persons												
December 2002	27.3	317.2	344.4	13.8	78.2	422.6	383.2	805.9	33.7	18.5	52.4	1.7
December 2003	31.2	319.8	351.0	13.2	76.4	427.4	383.0	810.4	29.8	17.9	52.7	1.6
December 2004	29.5	326.0	355.5	13.7	73.2	428.7	387.3	816.0	31.7	17.1	52.5	1.7
December 2005	32.5	321.9	354.5	18.6	80.4	434.9	406.9	841.8	36.4	18.5	51.7	2.2
TOTAL												
Males												
December 2002	158.3	203.4	361.7	45.1	85.3	447.0	249.8	696.8	22.2	19.1	64.2	6.5
December 2003	171.0	211.7	382.7	39.4	74.7	457.4	248.5	705.8	18.7	16.3	64.8	5.6
December 2004	170.4	211.6	382.0	43.0	77.7	459.7	252.8	712.5	20.1	16.9	64.5	6.0
December 2005	166.7	204.7	371.5	41.4	79.7	451.1	264.8	715.9	19.9	17.7	63.0	5.8
Females												
December 2002	90.3	280.9	371.2	28.0	67.7	439.0	229.8	668.8	23.6	15.4	65.6	4.2
December 2003	92.7	278.7	371.4	33.5	75.0	446.4	231.6	678.1	26.6	16.8	65.8	4.9
December 2004	103.7	276.2	379.9	35.1	78.0	457.9	226.0	683.9	25.3	17.0	67.0	5.1
December 2005	91.5	280.7	372.2	29.1	71.7	444.0	240.6	684.6	24.2	16.2	64.9	4.3
Persons												
December 2002	248.6	484.4	733.0	73.1	153.0	886.0	479.6	1 365.5	22.7	17.3	64.9	5.4
December 2003	263.6	490.5	754.1	72.9	149.7	903.8	480.1	1 383.9	21.7	16.6	65.3	5.3
December 2004	274.1	487.7	761.8	78.1	155.8	917.6	478.8	1 396.4	22.2	17.0	65.7	5.6
December 2005	258.2	485.5	743.7	70.5	151.4	895.1	505.4	1 400.4	21.5	16.9	63.9	5.0

* estimate is subject to sampling variability too high for most practical purposes

	EMPLOYED			UNEMPLOYED		Labour force	Not in labour force	Civilian population aged 15–19 years	UNEMPLOYMENT RATE		Participation rate	Unemployment to population ratio – looking for full-time work
	Full time	Part time	Total	Looking for f/t work	Total				Looking for f/t work	Total		
	'000	'000	'000	'000	'000				'000	'000		
NOT ATTENDING FULL-TIME EDUCATION												
New South Wales	64.7	50.0	114.7	15.2	23.1	137.8	31.6	169.3	19.0	16.8	81.4	9.0
Victoria	42.6	33.1	75.7	11.8	14.3	90.0	23.1	113.1	21.7	15.9	79.5	10.4
Queensland	54.9	39.5	94.4	13.4	17.3	111.7	24.6	136.3	19.6	15.5	81.9	9.8
South Australia	17.6	12.6	30.3	3.8	5.4	35.7	4.4	40.1	17.6	15.2	89.0	9.4
Western Australia	33.7	19.6	53.3	4.9	6.9	60.2	9.4	69.6	12.7	11.5	86.5	7.0
Tasmania	5.4	4.5	9.9	2.0	2.3	12.2	2.2	14.4	27.2	19.1	84.7	14.0
Northern Territory	3.0	*1.2	4.2	*0.3	*1.0	5.2	2.0	7.2	*7.9	*18.8	71.6	*3.5
Australian Capital Territory	3.7	3.1	6.8	*0.6	*0.6	7.5	*1.0	8.5	*14.5	*8.5	87.7	*7.5
Australia	225.7	163.5	389.2	51.9	71.0	460.2	98.4	558.6	18.7	15.4	82.4	9.3
ATTENDING FULL-TIME EDUCATION												
New South Wales	10.4	93.8	104.2	*4.8	21.8	126.0	162.1	288.1	*31.8	17.3	43.7	*1.7
Victoria	8.3	85.5	93.9	5.6	24.0	117.9	108.8	226.7	40.2	20.4	52.0	2.5
Queensland	6.2	64.1	70.3	*3.1	16.4	86.6	57.8	144.4	*33.0	18.9	60.0	*2.1
South Australia	2.3	26.0	28.3	*1.6	6.5	34.8	28.5	63.3	*41.0	18.7	55.0	*2.6
Western Australia	3.5	36.7	40.2	*2.7	8.2	48.4	28.9	77.3	*43.0	16.9	62.6	*3.5
Tasmania	*0.6	6.9	7.5	*0.4	*1.5	9.0	10.9	19.9	*39.8	*16.9	45.4	*2.0
Northern Territory	*0.6	2.9	3.5	*0.3	*0.5	4.1	3.4	7.5	*31.5	*13.0	54.2	*3.8
Australian Capital Territory	*0.5	6.1	6.6	*0.1	*1.4	8.0	6.6	14.6	*23.0	*17.3	55.0	*1.0
Australia	32.5	321.9	354.5	18.6	80.4	434.9	406.9	841.8	36.4	18.5	51.7	2.2
TOTAL												
New South Wales	75.1	143.8	218.9	20.0	45.0	263.8	193.6	457.5	21.0	17.0	57.7	4.4
Victoria	50.9	118.6	169.5	17.4	38.4	207.9	132.0	339.9	25.5	18.4	61.2	5.1
Queensland	61.1	103.6	164.7	16.4	33.7	198.3	82.4	280.7	21.2	17.0	70.6	5.9
South Australia	20.0	38.6	58.6	5.4	11.9	70.5	32.9	103.4	21.2	16.9	68.2	5.2
Western Australia	37.3	56.2	93.5	7.6	15.1	108.6	38.3	146.9	16.9	13.9	73.9	5.2
Tasmania	6.0	11.3	17.4	2.4	3.9	21.2	13.0	34.3	28.7	18.2	61.9	7.1
Northern Territory	3.6	4.1	7.7	*0.5	*1.5	9.2	5.5	14.7	*13.1	*16.2	62.7	*3.7
Australian Capital Territory	4.2	9.2	13.5	*0.8	2.0	15.5	7.6	23.1	*15.6	13.0	67.0	*3.4
Australia	258.2	485.5	743.7	70.5	151.4	895.1	505.4	1 400.4	21.5	16.9	63.9	5.0

* estimate is subject to sampling variability too high for most practical purposes

WHAT IF...? REVISIONS TO TREND ESTIMATES

EFFECT OF NEW SEASONALLY ADJUSTED ESTIMATES ON TREND ESTIMATES

TREND REVISIONS

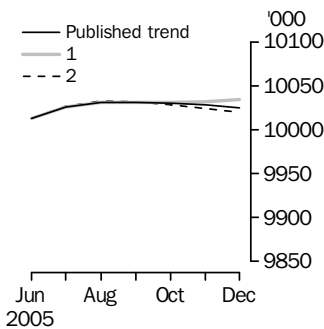
Each time new seasonally adjusted estimates become available, trend estimates are revised. This revision is a combined result of the concurrent seasonal adjustment process and the application of surrogates of the Henderson average to the seasonally adjusted series (see paragraphs 21 to 27 of the Explanatory Notes).

The examples in the tables below show two illustrative scenarios and the consequent revisions to previous trend estimates of employment and the unemployment rate. The revisions in the scenarios below are only due to the use of surrogates of the Henderson average, as the impact of revision of the seasonally adjusted estimates can not be estimated in advance.

- (1) The January seasonally adjusted estimate is *higher* than the December estimate by:
 - 0.26% for employment
 - 1.80% for the unemployment rate
- (2) The January seasonally adjusted estimate is *lower* than the December estimate by:
 - 0.26% for employment
 - 1.80% for the unemployment rate

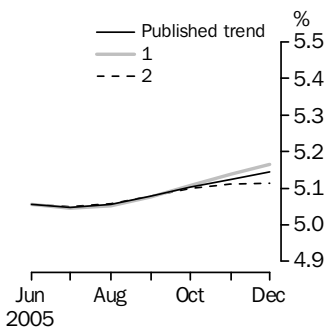
The percentage changes of 0.26% and 1.80% were chosen because they represent the average absolute monthly percentage changes in employment and the unemployment rate respectively.

EMPLOYMENT



	Trend as published	WHAT IF NEXT MONTH'S SEASONALLY ADJUSTED ESTIMATE IS:	
		(1) 10 059.1 i.e. rises by 0.26%	(2) 10 006.9 i.e. falls by 0.26%
2005			
September	10 031.3	10 031.2	10 032.1
October	10 029.9	10 030.6	10 028.2
November	10 028.3	10 031.6	10 023.8
December	10 025.3	10 034.3	10 019.8

UNEMPLOYMENT RATE



	Trend as published	WHAT IF NEXT MONTH'S SEASONALLY ADJUSTED ESTIMATE IS:	
		(1) 5.2 i.e. rises by 1.80%	(2) 5.0 i.e. falls by 1.80%
2005			
September	5.1	5.1	5.1
October	5.1	5.1	5.1
November	5.1	5.1	5.1
December	5.1	5.2	5.1

EXPLANATORY NOTES

INTRODUCTION

1 This publication contains estimates of the civilian labour force derived from the Labour Force Survey component of the Monthly Population Survey. The full time series for estimates from this publication are also available electronically – see *Labour Force, Australia, Spreadsheets* (cat. no. 6202.0.55.001). More detailed estimates are released one week after this publication in various electronic formats – see *Labour Force, Australia, Detailed – Electronic Delivery* (cat. no. 6291.0.55.001).

CONCEPTS, SOURCES AND METHODS

2 The conceptual framework used in Australia's Labour Force Survey aligns closely with the standards and guidelines set out in Resolutions of International Conferences of Labour Statisticians. Descriptions of the underlying concepts and structure of Australia's labour force statistics, and the sources and methods used in compiling the estimates, are presented in *Labour Statistics: Concepts, Sources and Methods* (cat. no. 6102.0.55.001) which is available on the ABS web site <<http://www.abs.gov.au>> (Methods, Classifications, Concepts & Standards).

LABOUR FORCE SURVEY

3 The Labour Force Survey is based on a multi-stage area sample of private dwellings (currently about 30,000 houses, flats, etc.) and a list sample of non-private dwellings (hotels, motels, etc.), and covers about 0.45% of the population of Australia. Information is obtained from the occupants of selected dwellings by specially trained interviewers.

4 The information is collected using computer-assisted interviewing (CAI), whereby responses are recorded directly onto an electronic questionnaire on a notebook computer. The CAI method was progressively implemented from October 2003 to August 2004, replacing the 'pen and paper' method previously used.

5 Households selected for the Labour Force Survey are interviewed each month for eight months, with one-eighth of the sample being replaced each month. The first interview is conducted face-to-face. Subsequent interviews are conducted by telephone (if acceptable to the respondent).

6 The interviews are generally conducted during the two weeks beginning on the Monday between the 6th and 12th of each month. The information obtained relates to the week before the interview (i.e. the reference week). Each year, to deal with operational difficulties involved with collecting and processing the Labour Force Survey around the Christmas and New Year holiday period, interviews for December start four weeks after November interviews start, and January interviews start five weeks after December interviews start. As a result, January interviewing may commence as early as the 8th or as late as the 14th, depending on the year. Occasionally, circumstances that present significant operational difficulties for survey collection can result in a change to the normal pattern for the start of interviewing.

7 Estimates from the Labour Force Survey are published first in this publication 31 days after the commencement of interviews for that month, with the exception of estimates for each December which are published 38 days after the commencement of interviews.

SCOPE OF SURVEY

8 The Labour Force Survey includes all persons aged 15 years and over except members of the permanent defence forces, certain diplomatic personnel of overseas governments customarily excluded from census and estimated population counts, overseas residents in Australia, and members of non-Australian defence forces (and their dependants) stationed in Australia.

COVERAGE

9 In the Labour Force Survey, coverage rules are applied which aim to ensure that each person is associated with only one dwelling, and hence has only one chance of selection. The coverage rules are necessarily a balance between theoretical and operational considerations. Nevertheless, the chance of a person being enumerated at two separate dwellings in the survey is considered to be negligible.

EXPLANATORY NOTES *continued*

POPULATION BENCHMARKS

10 Labour Force Survey estimates are calculated in such a way as to add up to independent estimates of the civilian population aged 15 years and over (population benchmarks). From February 2004, labour force estimates have been compiled using benchmarks based on the results of the 2001 Census of Population and Housing. Revisions were made to historical estimates from January 1999 to January 2004.

COMPARABILITY OF SERIES

11 From April 1986, the definition of employed persons was changed to include persons who worked without pay between 1 and 14 hours per week in a family business or on a farm (i.e. contributing family workers). For further information, see paragraphs 36 and 37 of the Explanatory Notes to the February 1987 issue of *Labour Force, Australia* (cat. no. 6203.0).

12 The ABS introduced telephone interviewing into the Labour Force Survey in August 1996. Implementation was phased in for each new sample group from August 1996 to February 1997. During the period of implementation, the new method produced different estimates than would have been obtained under the old methodology. The effect dissipated over the final months of implementation and was no longer discernible from February 1997. The estimates for February 1997 and onwards are directly comparable to estimates for periods prior to August 1996. For further details, see the feature article in the June 1997 issue of *Labour Force, Australia* (cat. no. 6203.0).

13 From April 2001 the Labour Force Survey has been conducted using a redesigned questionnaire containing additional data items and some minor definitional changes. The definition of unemployed persons was changed to include all persons who were waiting to start work and were available to start in the reference week. This change was introduced in February 2004, when historical unit record data were revised from April 2001 to January 2004. This revision created a small trend break at April 2001 in unemployed persons and unemployment rate series. For further details, see *Information Paper: Forthcoming Changes to Labour Force Statistics* (cat. no. 6292.0).

14 Core labour force series were revised in April 2001 for the period April 1986 to March 2001 for the remaining definitional changes introduced with the redesigned questionnaire, to reduce the impact of the changes on labour force series. For further details, see *Information Paper: Implementing the Redesigned Labour Force Survey Questionnaire* (cat. no. 6295.0) and *Information Paper: Questionnaires Used in the Labour Force Survey* (cat. no. 6232.0).

SURVEY SAMPLE REDESIGN

15 The Labour Force Survey sample was last reselected using information collected in the 2001 Census of Population and Housing.

16 The bulk of the new sample was phased in over the period November 2002 to June 2003, with one-eighth of this portion of the sample being introduced every month. The remainder of the sample (about 18% of the total), which covers less settled areas of Australia and non-private dwellings was rotated in full for New South Wales, Victoria, Tasmania, Northern Territory and Australian Capital Territory in November 2002, and for Queensland, South Australia and Western Australia in December 2002. Such a pattern of implementation means that any changes to labour force estimates due to differences between the two samples, or any other influences, were spread over the eight months.

17 For further details, see *Information Paper: Labour Force Survey Sample Design* (cat. no. 6269.0) and *Technical Report: New Labour Force Survey sample selections: analysis of the effect on estimates* in the October 2003 issue of *Australian Labour Market Statistics* (cat. no. 6105.0).

EXPLANATORY NOTES *continued*

RELIABILITY OF ESTIMATES

18 Two types of error are possible in an estimate based on a sample survey: sampling error and non-sampling error.

19 Sampling error occurs because a sample, rather than the entire population, is surveyed. One measure of the likely difference resulting from not including all dwellings in the survey is given by the standard error. There are about two chances in three that a sample estimate will differ by less than one standard error from the figure that would have been obtained if all dwellings had been included in the survey, and about nineteen chances in twenty that the difference will be less than two standard errors. Standard errors of estimates for the latest month and of estimates of movements since the previous month are shown on pages 27 and 28. Standard errors of other estimates and other movements may be determined by using information in the paper *Labour Force Survey Standard Errors* (cat. no. 6298.0) which is available free of charge on the ABS web site <<http://www.abs.gov.au>> (Papers & Articles).

20 Non-sampling error arises from inaccuracies in collecting, recording and processing the data. Every effort is made to minimise reporting error by the careful design of questionnaires, intensive training and supervision of interviewers, and efficient data processing procedures. Non-sampling error also arises because information cannot be obtained from all persons selected in the survey. The Labour Force Survey receives a high level of co-operation from individuals in selected dwellings, with the average response rate over the last year being 96%. See Glossary for definition of response rate.

SEASONAL ADJUSTMENT AND TREND ESTIMATION

21 Seasonal adjustment is a means of removing the estimated effects of normal seasonal variation from the series so that the effects of other influences on the series can be more clearly recognised. Seasonal adjustment does not aim to remove the irregular or non-seasonal influences which may be present in any particular month. This means that month-to-month movements of the seasonally adjusted estimates may not be reliable indicators of trend behaviour.

22 The Labour Force Survey uses the concurrent seasonal adjustment method to derive seasonal factors. Concurrent seasonal adjustment uses data up to the current month to estimate seasonal factors for the current and all previous months. This process can result in revisions each month to estimates for earlier periods. However, in most instances, the only noticeable revisions will be to the seasonally adjusted estimates for the previous month and one year prior to the current month.

23 Seasonal adjustment is able to remove the effect of events which occur at the same time in the survey every year. However, there are some events, like holidays, which are not always at the same time in the survey cycle or which are not at the same time across Australia. The effects of these types of events on LFS estimates cannot in all cases be removed, because the pattern of their effects cannot be determined. However, two events which are adjusted for in the seasonally adjusted series are the January interview start date and the timing of Easter.

24 For more information on concurrent seasonal adjustment and survey proximity to holiday periods, see *Information Paper: Forthcoming Changes to Labour Force Statistics* (cat. no. 6292.0).

25 While seasonal factors for the complete time series are estimated each month, they will continue to be reviewed annually at a more detailed level to take into account each additional year's original data. This annual review will not normally result in significant changes to published estimates. The review will be conducted in February each year with the results released in the February issue of this publication.

EXPLANATORY NOTES *continued*

SEASONAL ADJUSTMENT AND TREND ESTIMATION *continued*

26 The smoothing of seasonally adjusted series to produce 'trend' series reduces the impact of the irregular component of the seasonally adjusted series. These trend estimates are derived by applying a 13-term Henderson-weighted moving average to all months except the last six. The last six monthly trend estimates are obtained by applying surrogates of the Henderson average to the seasonally adjusted series. Trend estimates are used to analyse the underlying behaviour of a series over time.

27 While this smoothing technique enables estimates to be produced for the latest month, it does result in revisions in addition to those caused by the revision of seasonally adjusted estimates. Generally, revisions due to the use of surrogates of the Henderson average become smaller, and after three months have a negligible impact on the series.

28 Trend estimates are published for the Northern Territory in table 10 and for the Australian Capital Territory in table 11. Unadjusted series for the two territories have shown, historically, a high degree of variability, which can lead to considerable revisions to the seasonally adjusted estimates each month when seasonal factors are estimated. For this reason, seasonally adjusted estimates are not currently published for the two Territories. In addition, caution should be exercised in the interpretation of trend estimates for the two territories, particularly for the three most recent months, where revisions may be relatively large.

29 For further information, see *A Guide to Interpreting Time Series – Monitoring Trends* (cat. no. 1349.0) or contact the Assistant Director, Time Series Analysis on (02) 6252 6345.

RELATED PUBLICATIONS

30 Users may also wish to refer to *Australian Labour Market Statistics* (cat. no. 6105.0). This publication contains additional tables and a detailed list of related publications. For further information about this publication, please contact the Assistant Director, Labour Market Statistics on (02) 6252 7636.

31 ABS Information about the labour market can be found on the Labour theme page on the ABS web site <<http://www.abs.gov.au>>(Themes), or from ABS Bookshops.

32 Current publications and other products released by the ABS are listed in the *Catalogue of Publications and Products* (cat. no. 1101.0). The Catalogue is available from any ABS office or the ABS web site <<http://www.abs.gov.au>> (AusStats). The ABS also issues a daily Release Advice on the web site (AusStats) which details products to be released in the week ahead.

DATA AVAILABLE ON REQUEST

33 As well as the statistics included in this and related publications, the ABS may have other relevant data available. Inquiries should be made to Michael Johnson on (02) 6252 6525 or to any ABS office.

EFFECTS OF ROUNDING

34 Estimates have been rounded and discrepancies may occur between sums of the component items and totals.

35 Estimates of movement shown in this publication are obtained by taking the difference of unrounded estimates. The movement estimate is then rounded to one decimal place. Therefore where a discrepancy occurs between the reported movement and the difference of the rounded estimates, the reported movement will be more accurate.

SYMBOLS AND OTHER USAGES

36 SYMBOLS AND OTHER USAGES
pts percentage points

STANDARD ERRORS

STANDARD ERRORS

The estimates in this publication are based on information gained from the occupants of a sample survey of dwellings. Because the entire population is not surveyed, the published estimates are subject to sampling error. The most common way of quantifying such sampling error is to calculate the standard error for the published estimate or statistic. For more information, see paragraph 19 of the Explanatory Notes.

LEVEL ESTIMATES

To illustrate, let us say the published level estimate for employed persons aged 15–19 years is 700,000 and the associated standard error is 9,800. The standard error is then used to interpret the level estimate of 700,000. For instance, the standard error of 9,800 indicates that:

- There are approximately two chances in three that the real value falls within the range 690,200 to 709,800 (700,000 + or – 9,800)
- There are approximately nineteen chances in twenty that the real value falls within the range 680,400 to 719,600 (700,000 + or – 19,600).

The real value in this case is the result we would obtain if we could enumerate the total population.

The following table shows the standard errors for this month's level estimates.

AUSTRALIA												
		NSW	Vic.	Qld	SA	WA	Tas.	NT	ACT	Males	Females	Persons
Aged 15 years and over												
Employed												
Full time	'000	21.7	17.2	14.3	6.6	8.7	3.0	4.0	2.1	26.7	18.3	32.5
Part time	'000	13.2	10.8	9.6	4.4	6.0	2.1	1.4	1.4	9.7	16.4	20.0
Total	'000	24.9	20.1	15.5	7.6	9.6	3.6	4.9	2.3	28.9	26.1	36.9
Unemployed												
Looking for f/t work	'000	7.8	6.0	4.6	2.1	2.5	1.2	1.0	0.6	8.4	6.8	11.0
Looking for p/t work	'000	4.5	4.0	3.1	1.5	1.7	0.6	0.8	0.5	4.5	5.4	7.1
Total	'000	9.3	7.4	5.6	2.6	3.0	1.4	1.4	0.8	9.7	8.8	13.4
Labour force	'000	25.5	20.6	15.6	7.7	9.7	3.7	5.2	2.3	29.6	26.8	37.5
Not in labour force	'000	22.9	17.6	13.3	6.5	8.8	3.2	4.3	2.0	23.8	29.1	34.4
Unemployment rate												
Looking for f/t work	pts	0.3	0.3	0.3	0.4	0.3	0.7	1.2	0.4	0.2	0.3	0.1
Looking for p/t work	pts	0.5	0.5	0.5	0.6	0.5	0.7	3.2	0.9	0.5	0.2	0.2
Total	pts	0.3	0.3	0.3	0.3	0.3	0.6	1.3	0.4	0.2	0.2	0.1
Participation rate	pts	0.5	0.5	0.5	0.6	0.6	0.9	3.5	0.9	0.4	0.3	0.2
Aged 15–19 years												
Employed												
Full time	'000	3.4	2.6	2.5	1.1	1.6	0.5	0.5	0.4	4.6	3.6	5.6
Part time	'000	4.4	3.6	3.2	1.6	1.9	0.7	0.5	0.5	5.0	5.8	7.5
Total	'000	5.5	4.4	4.2	2.0	2.7	0.8	0.7	0.6	6.6	6.6	9.3
Unemployed												
Looking for f/t work	'000	2.8	2.3	2.2	0.9	1.2	0.5	0.3	0.3	3.5	2.9	4.6
Looking for p/t work	'000	3.1	2.6	2.2	1.0	1.2	0.4	0.4	0.3	3.3	3.5	4.9
Total	'000	4.3	3.6	3.1	1.4	1.7	0.7	0.5	0.4	4.9	4.6	6.8
Labour force	'000	6.1	5.0	4.8	2.2	3.0	0.9	0.8	0.7	7.2	7.2	10.2
Not in labour force	'000	6.9	5.2	3.8	1.8	2.3	0.9	0.8	0.6	6.8	6.5	10.0
Unemployment rate												
Looking for f/t work	pts	2.8	3.2	2.7	3.6	2.6	5.7	6.6	5.4	1.6	2.3	1.3
Looking for p/t work	pts	1.8	1.8	1.8	2.3	1.8	3.0	7.4	3.2	1.3	1.1	0.8
Total	pts	1.6	1.7	1.5	2.0	1.6	3.0	5.4	2.8	1.0	1.0	0.7
Participation rate	pts	1.3	1.5	1.7	2.1	2.1	2.7	5.2	3.0	1.0	1.0	0.7
Unemployment to population ratio – looking for f/t work	pts	0.6	0.7	0.8	0.9	0.8	1.5	1.9	1.2	0.5	0.4	0.3

STANDARD ERRORS *continued*

MOVEMENT ESTIMATES

The following example illustrates how to use the standard error to interpret a movement estimate. Let us say that one month the published level estimate for females employed part time in Australia is 1,890,000; the next month the published level estimate is 1,900,000 and the associated standard error for the movement estimate is 10,600. The standard error is then used to interpret the published movement estimate of 10,000. For instance, the standard error of 10,600 indicates that:

- There are approximately two chances in three that the real movement between the two months falls within the range -600 to 20,600 (10,000 + or - 10,600)
- There are approximately nineteen chances in twenty that the real movement falls within the range -11,200 to 31,200 (10,000 + or - 21,200).

The following table shows the standard errors for this month's movement estimates.

		AUSTRALIA										
		NSW	Vic.	Qld	SA	WA	Tas.	NT	ACT	Males	Females	Persons
Aged 15 years and over												
Employed												
Full time	'000	13.8	10.6	9.0	4.0	5.4	1.7	1.5	1.5	16.9	12.0	21.4
Part time	'000	8.2	6.6	5.5	2.5	3.4	1.2	0.8	0.9	6.9	10.9	12.9
Total	'000	16.5	12.8	11.6	5.5	7.2	2.4	1.8	1.8	18.5	16.5	26.0
Unemployed												
Looking for f/t work	'000	7.7	5.9	5.0	2.1	2.7	1.2	0.8	0.7	8.8	7.1	11.6
Looking for p/t work	'000	4.5	3.9	3.3	1.4	1.8	0.7	0.6	0.5	4.7	5.6	7.4
Total	'000	9.1	7.4	6.1	2.6	3.2	1.4	1.1	0.8	10.1	9.2	14.1
Labour force	'000	17.0	13.3	12.1	5.8	7.5	2.5	1.9	1.8	19.0	17.0	26.8
Not in labour force	'000	16.0	12.9	10.5	5.1	6.1	2.1	1.7	1.8	14.5	18.7	25.2
Unemployment rate												
Looking for f/t work	pts	0.3	0.3	0.3	0.4	0.3	0.8	1.1	0.5	0.2	0.3	0.2
Looking for p/t work	pts	0.5	0.5	0.5	0.6	0.5	0.9	3.2	0.9	0.5	0.2	0.2
Total	pts	0.3	0.3	0.3	0.3	0.3	0.6	1.3	0.4	0.2	0.2	0.1
Participation rate	pts	0.3	0.3	0.4	0.5	0.5	0.6	1.3	0.7	0.2	0.2	0.2
Aged 15-19 years												
Employed												
Full time	'000	2.7	1.9	2.0	0.9	1.3	0.4	0.3	0.3	3.6	2.9	4.2
Part time	'000	3.5	2.8	2.5	1.2	1.6	0.5	0.4	0.4	3.9	4.4	5.5
Total	'000	4.2	3.2	3.1	1.4	1.9	0.6	0.5	0.5	4.9	4.9	6.7
Unemployed												
Looking for f/t work	'000	2.8	2.3	2.3	0.9	1.3	0.5	0.2	0.3	3.6	3.0	4.8
Looking for p/t work	'000	3.2	2.6	2.3	1.0	1.2	0.4	0.3	0.4	3.5	3.7	5.1
Total	'000	4.3	3.6	3.4	1.4	1.8	0.6	0.4	0.5	5.1	4.8	7.1
Labour force	'000	4.5	3.6	3.3	1.5	2.1	0.6	0.5	0.5	5.3	5.3	7.3
Not in labour force	'000	4.8	3.7	3.0	1.4	1.8	0.6	0.6	0.5	5.4	5.1	7.2
Unemployment rate												
Looking for f/t work	pts	3.1	3.4	2.9	3.9	2.9	5.8	6.9	7.5	1.7	2.5	1.4
Looking for p/t work	pts	1.8	1.9	1.8	2.3	1.8	3.3	7.0	3.2	1.4	1.1	0.9
Total	pts	1.7	1.7	1.6	2.0	1.6	3.1	5.3	3.0	1.1	1.0	0.8
Participation rate	pts	1.0	1.0	1.2	1.4	1.4	1.9	3.5	2.3	0.7	0.8	0.5
Unemployment to population ratio - looking for f/t work												
	pts	0.6	0.7	0.8	0.9	0.9	1.4	1.5	1.2	0.5	0.4	0.3

GLOSSARY

Actively looking for work	Includes writing, telephoning or applying in person to an employer for work; answering an advertisement for a job; checking factory noticeboards or the touchscreens at the Centrelink offices; being registered with Centrelink as a jobseeker; checking or registering with any other employment agency; advertising or tendering for work; and contacting friends or relatives.
Attending full-time education	Persons aged 15–24 years enrolled at secondary or high school or enrolled as a full time student at a Technical and Further Education (TAFE) college, university, or other educational institution in the reference week.
Attending school	Persons aged 15–19 years enrolled at secondary or high school in the reference week.
Attending tertiary educational institution full time	Persons aged 15–24 years enrolled full time at a TAFE college, university, or other educational institution in the reference week, except those persons aged 15–19 years who were still attending school.
Civilian population aged 15 years and over	All usual residents of Australia aged 15 years and over except members of the permanent defence forces, certain diplomatic personnel of overseas governments customarily excluded from census and estimated population counts, overseas residents in Australia, and members of non-Australian defence forces (and their dependants) stationed in Australia.
Employed	All persons aged 15 years and over who, during the reference week: <ul style="list-style-type: none">■ worked for one hour or more for pay, profit, commission or payment in kind in a job or business, or on a farm (comprising employees, employers and own account workers); or■ worked for one hour or more without pay in a family business or on a farm (i.e. contributing family workers); or■ were employees who had a job but were not at work and were:<ul style="list-style-type: none">■ away from work for less than four weeks up to the end of the reference week; or■ away from work for more than four weeks up to the end of the reference week and received pay for some or all of the four week period to the end of the reference week; or■ away from work as a standard work or shift arrangement; or■ on strike or locked out; or■ on workers' compensation and expected to return to their job; or■ were employers or own account workers, who had a job, business or farm, but were not at work.
Employment to population ratio	For any group, the number of employed persons expressed as a percentage of the civilian population in the same group.
Full-time workers	Employed persons who usually worked 35 hours or more a week (in all jobs) and those who, although usually working less than 35 hours a week, worked 35 hours or more during the reference week.
Labour force	For any group, persons who were employed or unemployed, as defined.
Labour force status	A classification of the civilian population aged 15 years and over into employed, unemployed or not in the labour force, as defined. The definitions conform closely to the international standard definitions adopted by the International Conferences of Labour Statisticians.
Not in labour force	Persons who were not in the categories employed or unemployed as defined.
Participation rate	For any group, the labour force expressed as a percentage of the civilian population aged 15 years and over in the same group.
Part-time workers	Employed persons who usually worked less than 35 hours a week (in all jobs) and either did so during the reference week, or were not at work in the reference week.

GLOSSARY *continued*

Response rate	The number of fully responding dwellings expressed as a percentage of the total number of dwellings excluding sample loss. Examples of sample loss include: dwellings where all persons are out of scope and/or coverage; vacant dwellings; dwellings under construction; dwellings converted to non-dwellings; derelict dwellings; and demolished dwellings.
Seasonally adjusted series	A time series of estimates with the estimated effects of normal seasonal variation removed. See Explanatory Notes 21 to 25 for more detail.
Trend series	A smoothed seasonally adjusted series of estimates. See Explanatory Notes 26 to 28 for more detail.
Unemployed	Persons aged 15 years and over who were not employed during the reference week, and: <ul style="list-style-type: none">■ had actively looked for full-time or part-time work at any time in the four weeks up to the end of the reference week and were available for work in the reference week; or■ were waiting to start a new job within four weeks from the end of the reference week and could have started in the reference week if the job had been available then.
Unemployed looking for full-time work	Unemployed persons who: <ul style="list-style-type: none">■ actively looked for full-time work; or■ were waiting to start a new full-time job.
Unemployed looking for part-time work	Unemployed persons who: <ul style="list-style-type: none">■ actively looked for part-time work only; or■ were waiting to start a new part-time job.
Unemployment rate	For any group, the number of unemployed persons expressed as a percentage of the labour force in the same group.
Unemployment to population ratio	For any group, the number of unemployed persons expressed as a percentage of the civilian population in the same group.

FOR MORE INFORMATION . . .

- INTERNET* **www.abs.gov.au** the ABS web site is the best place for data from our publications and information about the ABS.
- LIBRARY* A range of ABS publications are available from public and tertiary libraries Australia wide. Contact your nearest library to determine whether it has the ABS statistics you require, or visit our web site for a list of libraries.

INFORMATION AND REFERRAL SERVICE

Our consultants can help you access the full range of information published by the ABS that is available free of charge from our web site, or purchase a hard copy publication. Information tailored to your needs can also be requested as a 'user pays' service. Specialists are on hand to help you with analytical or methodological advice.

- PHONE* 1300 135 070
- EMAIL* client.services@abs.gov.au
- FAX* 1300 135 211
- POST* Client Services, ABS, GPO Box 796, Sydney NSW 2001

FREE ACCESS TO STATISTICS

All ABS statistics can be downloaded free of charge from the ABS web site.

- WEB ADDRESS* www.abs.gov.au



2620200012054

ISSN 1448 2819

RRP \$26.00